



# Installation Guide

Version 12.0

RADVIEW

The software supplied with this document is the property of RadView Software and is furnished under a licensing agreement. Neither the software nor this document may be copied or transferred by any means, electronic or mechanical, except as provided in the licensing agreement. The information in this document is subject to change without prior notice and does not represent a commitment by RadView Software or its representatives.

*WebLOAD Installation Guide*

© Copyright 2018 by RadView Software. All rights reserved.

November, 2018, RadView Publication Number WL-PRO-0711-ING90

WebLOAD, TestTalk, Authoring Tools, ADL, AppletLoad, and WebExam, are trademarks or registered trademarks of RadView Software IBM, and OS/2 are trademarks of International Business Machines Corporation. Microsoft Windows, Microsoft Windows 95, Microsoft Windows NT, Microsoft Word for Windows, Microsoft Internet Explorer, Microsoft Excel for Windows, Microsoft Access for Windows and Microsoft Access Runtime are trademarks or registered trademarks of Microsoft Corporation. SPIDERSESSION is a trademark of NetDynamics. UNIX is a registered trademark of AT&T Bell Laboratories. Solaris, Java and Java-based marks are registered trademarks of Sun Microsystems, Inc. HP-UX is a registered trademark of Hewlett-Packard. SPARC is a registered trademark of SPARC International, Inc. Netscape Navigator and LiveConnect are registered trademarks of Netscape Communications Corporation. Any other trademark name appearing in this book is used for editorial purposes only and to the benefit of the trademark owner with no intention of infringing upon that trademark.

<b>For product assistance or information, contact:</b>	
Toll free in the US:	1-888-RadView
Fax:	+1-908-864-8099
World Wide Web	<a href="http://www.RadView.com">www.RadView.com</a>
<b>North American Headquarters:</b>	<b>International Headquarters:</b>
RadView Software Inc. 991 Highway 22 West, Suite 200 Bridgewater, NJ 08807 Email: <a href="mailto:info@RadView.com">info@RadView.com</a> Phone: 908-526-7756 Fax: 908-864-8099 Toll Free: 1-888-RadView	RadView Software Ltd. 13 Haamal Street, Park Afek Rosh Haayin 4809249 Israel Email: <a href="mailto:info@RadView.com">info@RadView.com</a> Phone: +972-3-915-7011 Fax: +972-3-915-7683

# Table of Contents

<b>Chapter 1. Introduction .....</b>	<b>1</b>
WebLOAD Documentation.....	1
Typographical Conventions.....	3
Where to Get More Information.....	4
Online Help .....	4
Technical Support Website.....	4
Technical Support.....	4
<b>Chapter 2. System Requirements .....</b>	<b>5</b>
Windows Platforms.....	5
Linux Platforms (for WebLOAD Load Machines).....	6
<b>Chapter 3. Installing WebLOAD for Windows.....</b>	<b>7</b>
Installing WebLOAD for Windows .....	7
Command Line Installation.....	7
Using the Installation Wizard .....	8
Installing WebRM.....	9
Upgrading WebLOAD.....	10
Installing and Configuring the WebLOAD Analytics Database.....	11
Creating the Database when Postgre SQL is Already Installed.....	11
Installing and Configuring the Database on a Dedicated Machine.....	11
Configuring Postgre SQL to Allow Remote Database Connections.....	12
Configuring Clients to Work with the Remote Database .....	13
Installing Third Party Software for Server-side Monitoring .....	13
<b>Chapter 4. Installing WebLOAD for Linux.....</b>	<b>15</b>
Installing the WebLOAD Load Engine for Linux .....	15
Running the Load Engine on Linux.....	16
Installing Third Party Software for Server-side Monitoring .....	16

**Chapter 5. Registering and Updating the WebLOAD License..... 17**

- License administration through the UI ..... 17
  - Standard License Registration .....17
  - Free Edition License .....19
  - WebRM Server .....20
- License administration through the Command Line Interface..... 22

**Chapter 6. Configuring Connection to the Oracle Database using WebLOAD ... 23**

**Chapter 7. Uninstalling WebLOAD ..... 25**

**Index..... 27**

# Introduction

Welcome to WebLOAD, the premier performance, scalability, and reliability testing solution for internet applications.

WebLOAD is easy to use and delivers maximum testing performance and value. WebLOAD verifies the scalability and integrity of internet applications by generating a load composed of Virtual Clients that simulate real-world traffic. Probing Clients let you refine the testing process by acting as a single user that measures the performance of targeted activities, and provides individual performance statistics of the internet application under load.

This section provides a brief introduction to WebLOAD technical support, including both documentation and online support.

**IMPORTANT NOTE:** In previous WebLOAD versions, a WebLOAD script was called an “Agenda”. From version 12.0, it is referred to simply as a script. Wherever “Agenda” is still displayed, we are referring to the WebLOAD script.

WebLOAD Recorder was formerly referred to as WebLOAD IDE.

---

## WebLOAD Documentation

WebLOAD is supplied with the following documentation:

### **WebLOAD™ Installation Guide**

Instructions for installing WebLOAD and its add-ons.

### **WebLOAD™ Recorder User’s Guide**

Instructions for recording, editing, and debugging load test scripts to be executed by WebLOAD to test your Web-based applications.

### **WebLOAD™ Console User’s Guide**

A guide to using WebLOAD console, RadView’s load/scalability testing tool to easily and efficiently test your Web-based applications. This guide also includes a

quick start section containing instructions for getting started quickly with WebLOAD using the RadView Software test site.

**WebLOAD™ Analytics User's Guide**

Instructions on how to use WebLOAD Analytics to analyze data and create custom, informative reports after running a WebLOAD test session.

**WebRM™ User's Guide**

Instructions for managing testing resources with the WebLOAD Resource Manager.

**WebLOAD™ Scripting Guide**

Complete information on scripting and editing JavaScript scripts for use in WebLOAD and WebLOAD Recorder.

**WebLOAD™ JavaScript Reference Guide**

Complete reference information on all JavaScript objects, variables, and functions used in WebLOAD and WebLOAD Recorder test scripts.

**WebLOAD™ Extensibility SDK**

Instructions on how to develop extensions to tailor WebLOAD to specific working environments.

**WebLOAD™ Automation Guide**

Instructions for automatically running WebLOAD tests and reports from the command line, or by using the WebLOAD plugin for Jenkins

**WebLOAD™ Cloud User Guide**

Instructions for using RadView's WebLOAD Cloud to view, analyze and compare load sessions in a web browser, with full control and customization of the display.



The guides are distributed with the WebLOAD software in online help format. The guides are also supplied as Adobe Acrobat files. View and print these files using the Adobe Acrobat Reader. Install the Reader from the Adobe website <http://www.adobe.com>.

## Typographical Conventions

Before you start using this guide, it is important to understand the terms, icons, and typographical conventions used in the documentation.

The following icons appear next to the text to identify special information.

Table 1: Icon Conventions

Icon	Type of Information
	Indicates a note.
	Indicates a feature that is available only as part of a WebLOAD Add-on.

The following kinds of formatting in the text identify special information.

Table 2: Typographical Conventions

Formatting convention	Type of Information
<b>Special Bold</b>	Items you must select, such as menu options, command buttons, or items in a list.
<i>Emphasis</i>	Use to emphasize the importance of a point or for variable expressions such as parameters.
CAPITALS	Names of keys on the keyboard. for example, SHIFT, CTRL, or ALT.
KEY+KEY	Key combinations for which the user must press and hold down one key and then press another, for example, CTRL+P or ALT+F4.

## Where to Get More Information

This section contains information on how to obtain technical support from RadView worldwide, should you encounter any problems.

### Online Help

WebLOAD provides a comprehensive on-line help system with step-by-step instructions for common tasks.

You can press the **F1** key on any open dialog box for an explanation of the options or select **Help > Contents** to open the on-line help contents and index.

### Technical Support Website

The technical support pages on our website contain:

- The option of opening a ticket
- Links to WebLOAD documentation

### Technical Support

For technical support in your use of this product, contact:

North American Headquarters	International Headquarters
e-mail: <a href="mailto:support@RadView.com">support@RadView.com</a> Phone: 1-888-RadView (1-888-723-8439) (Toll Free) 908-526-7756 Fax: 908-864-8099	e-mail: <a href="mailto:support@RadView.com">support@RadView.com</a> Phone: +972-3-915-7060 Fax: +972-3-915-7011



**Note:** We encourage you to use e-mail for faster and better service.

When contacting technical support please include in your message the full name of the product, as well as the version and build number.



## System Requirements

WebLOAD has the following system requirements. WebLOAD Console, WebLOAD Recorder, WebLOAD Analytics, WebLOAD Probing Client, and WebRM can only be run on Windows platforms. WebLOAD Load Machines can be run on Windows, and Linux platforms.



**Note:** For any installation, you must have Administrator rights for the computer on which you are installing.

### Windows Platforms

Table 3: WebLOAD System Requirements

Requirements	WebLOAD Console, WebLOAD Recorder, WebLOAD Analytics, WebLOAD Probing Client, and WebRM	Load Machine
Computer / Processor	IBM-compatible PC (x86-32) with Pentium III 800 MHz (or higher) microprocessor	IBM-compatible PC (x86-32) with Pentium III 800 MHz (or higher) microprocessor; Pentium 4 is recommended
Operating System	<ul style="list-style-type: none"> <li>• Windows 2000 Professional</li> <li>• Windows XP Pro (SP2)</li> <li>• Windows Vista</li> <li>• Windows 7</li> <li>• Windows 8</li> <li>• Windows Server 2003</li> <li>• Windows Server 2008</li> <li>• Windows Server 2012</li> </ul>	<ul style="list-style-type: none"> <li>• Windows 2000 Server / Advanced Server</li> <li>• Windows XP Pro (SP2)</li> <li>• Windows Vista</li> <li>• Windows 7</li> <li>• Windows Server 2003, Standard and Enterprise Editions</li> <li>• Windows Server 2008</li> </ul>
Memory	1 GB RAM (minimum); 4 GB is recommended	1 GB RAM (minimum); 4 GB is recommended
Free Disk Space	2 GB	2 GB

## Linux Platforms (for WebLOAD Load Machines)

Table 4: WebLOAD Load Machine System Requirements

Requirements	Load Machine
Hardware	IBM-compatible PC (x86-32) with Pentium III 800 MHz (or higher) microprocessor; Pentium 4 is recommended
Version	<ul style="list-style-type: none"> <li>• Fedora Core 3 or higher</li> <li>• Red Hat Enterprise Linux 3 or higher</li> <li>• CentOS 6</li> <li>• Java Runtime Environment (JRE) 1.6 or higher</li> </ul>
Free Disk Space	2 GB
Swap Space	RAM*2
Memory	1 GB RAM (minimum); 4 GB is recommended



### Notes:

WebLOAD components in each major version will work with all other components of the same version. WebLOAD components are not compatible with other components of a different version. Verify that the WebLOAD components have been upgraded to Version 10.0 on all participating hosts. Running WebLOAD Console Version 10.0 with an earlier version of Load Generator (running on different Hosts) may cause unexpected behavior.

The WebLOAD license file is limited to the computer system (machine) on which WebLOAD is initially installed. Before installing WebLOAD, make sure you are installing on the machine with which you intend to work.

When installing WebLOAD with Unicode support on a system running an English MS Windows, Japanese must be configured as the default Windows language.

# Installing WebLOAD for Windows

This chapter provides step-by-step instructions for installing WebLOAD on a PC running Windows systems.

---

## Installing WebLOAD for Windows

You can choose either of the following installation methods:

- *Command Line Installation*
- *Using the Installation Wizard*

### Command Line Installation

To perform a command line installation, run the following command:

```
< WebLOAD executable installation file > [flags]
```

Where the flags (case sensitive) are:

/SILENT	Silent mode
/DIR=" <i>&lt;destination directory&gt;</i> "	Destination directory
/TYPE=Agent	Install a Load Generator only
/TYPE=Dashboard	Install the Web Dashboard only
/SERVICE	Install TestTalk as a service
/DOMAIN=" <i>&lt;domain name&gt;</i> "	The domain in which to install for service installation
/USERNAME=" <i>&lt;user name&gt;</i> "	The user name for service installation
/PASS=" <i>&lt;user password&gt;</i> "	The password of the service installation
/MANUAL	How to start the service. If not set, the service will start automatically
/NOCHECK	Do not check for a previous installation

For example:

```
WebLOAD Professional-10.1.0.013.en.exe /SILENT  
/DIR="c:\radviewtemp" /TYPE=Agent /SERVICE /MANUAL  
/DOMAIN="dom" /USERNAME="us" /PASS="pas" /NOCHECK
```

## Using the Installation Wizard

When you install WebLOAD on your computer, the installation program asks you for the components to install. As part of the installation process, WebLOAD installs a database management system (PostgreSQL 8.3) for use with WebLOAD Analytics. For more information about PostgreSQL, refer to [www.postgresql-support.de](http://www.postgresql-support.de).

Install the WebLOAD components as follows:

- Install the full WebLOAD product on computers that will be used to run the WebLOAD Console.
- Install only the Load Generator or the Probing Client software on a computer that will be a dedicated Load Machine. There is no need to install the full product on computers that will be used as Load Machines.

### To install WebLOAD on your system:

1. Browse to the location of the WebLOAD executable (\*.exe) installation file.
2. Double-click the file.

The WebLOAD Installation Wizard appears.

3. Follow the instructions in the Installation Wizard.
4. In the Select Components screen.
  - Select the type of installation. For Load Machines and Probing Clients, select **Load Generator only**.
  - Specify whether to install the **Load Generator As Service**.
    - If you select this option, TestTalk is installed as a service. Since a service can be started automatically, this is especially useful for machines that serve only as Load Generators.
    - If you do not select this option, TestTalk is installed as an executable file.
  - Specify whether to also install the WebLOAD Cloud. The Web Cloud enables viewing, analyzing and comparing load sessions in a web browser, with full control and customization of the display.

**Note:** The installation process is the same for Load Machines and Probing Clients.

When the WebLOAD installation is complete, the WebLOAD License dialog box automatically opens to complete the registration process. License registration is discussed in *Registering and Updating the WebLOAD License* (on page 17).

---

## Installing WebRM

### To install WebRM:

1. Browse to the location of the `WebRM-10.0.xxx.en.exe` installation file.
2. Double-click the file. The WebRM Installation Wizard appears.
3. The WebRM Installation Wizard displays the Select Destination Location dialog box. On the Select Destination Location dialog box, browse to the location where you would like WebRM installed. By default, this location is `C:\Program Files\RadView\WebRM`.
4. Click **Next**.
5. The WebRM Installation Wizard displays the Select License Location dialog box. This dialog box displays your HostID and enables you to browse to the License location.



**Note:** If you have already received your WebRM License file, skip to step 9.

6. If you have not received your License file, copy the HostID displayed in the text box into an email, together with your name, company, address, and phone number. Send the email to [support@radview.com](mailto:support@radview.com).  
A WebRM license file (\*.lic) will be sent to you.
7. After receiving the file, save it on the hard drive of your WebRM machine.
8. Double-click the WebRM executable installation file to restart the installation process.
9. On the Select License dialog box, browse to the location where you saved your WebRM license, select the file and click **Next**.

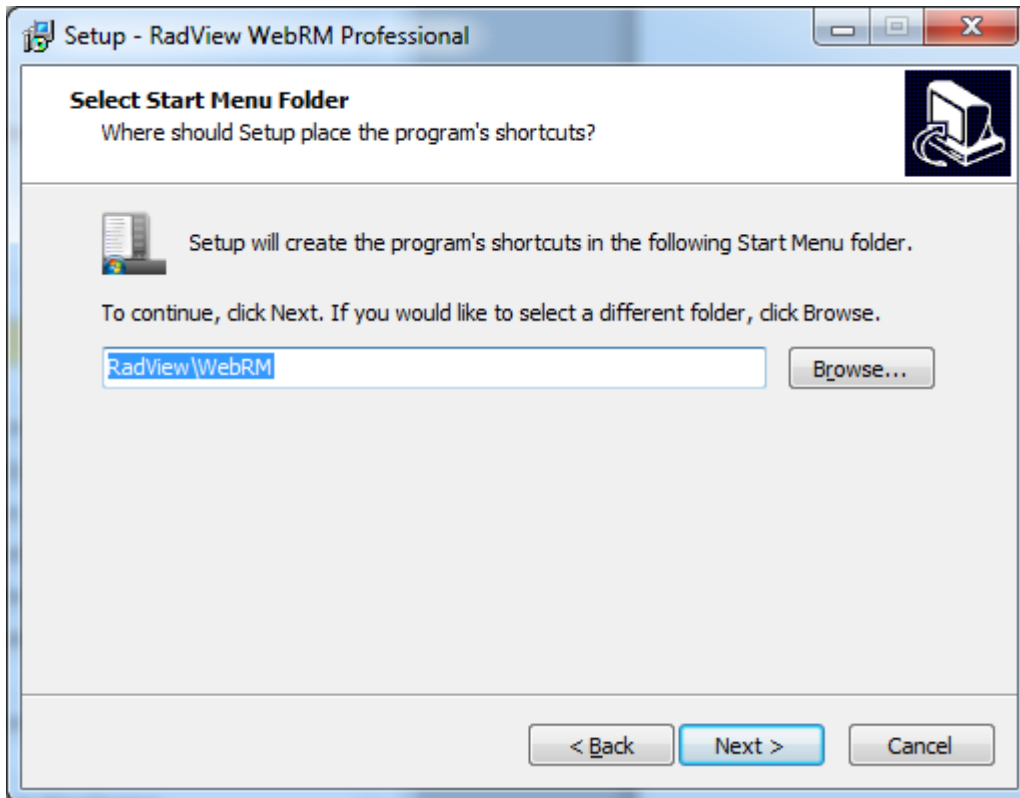


Figure 1: WebRM Installation Wizard – Select Start Menu Folder

10. WebRM begins the installation. When the WebRM installation process is complete, a dialog box appears stating that the WebRM installation has completed successfully. Click **Finish**.

---

## Upgrading WebLOAD

### To upgrade WebLOAD:

1. Close TestTalk.
2. Close all browser windows that are open.
3. Uninstall the existing WebLOAD version.  
For instructions on the uninstall procedure, see *Uninstalling WebLOAD* (on page 25).
4. Install the new version of WebLOAD.  
For installation instructions, see *Installing WebLOAD for Windows* (on page 7).

---

## Installing and Configuring the WebLOAD Analytics Database

WebLOAD stores information from Load Sessions in a Postgre SQL database for use with WebLOAD Analytics. You can install Postgre SQL and the WebLOAD Analytics database during the WebLOAD installation or manually after WebLOAD has already been installed. You might want to perform manual installation in the following situations:

- If Postgre SQL is already installed on your machine and you only need to create the WebLOAD Analytics database. For instructions, refer to *Creating the Database when Postgre SQL is Already Installed* on page 11.
- If you want to use a different machine as the database server and have several WebLOAD Analytics applications connect to the database. For instructions, refer to *Installing and Configuring the Database on a Dedicated Machine* on page 11.

### Creating the Database when Postgre SQL is Already Installed

If Postgre SQL is already installed on your machine, you do not have to reinstall it during the WebLOAD installation. However, you must complete the following steps in order to create the WebLOAD Analytics database in Postgre SQL so that it can be used by WebLOAD Analytics.

**To create the WebLOAD Analytics database after WebLOAD was installed:**

- Run `deploy-database.bat` from the `C:\Program Files\RadView\WebLOAD\bin\database` folder.

### Installing and Configuring the Database on a Dedicated Machine

You can run the Postgre SQL database using a dedicated machine with several WebLOAD Analytics client applications.

**To install and configure the database on a dedicated machine:**

1. Install Postgre SQL.



**Note:** It is recommended to install Postgre SQL Version 8.3. You can download the application from <http://www.postgresql.org/download/> and install it using its default installation settings.

2. Copy all the files from the `C:\Program Files\RadView\WebLOAD\bin\database` directory to a temporary folder on the dedicated server.
3. Run `deploy-database.bat` from the temporary folder to which you copied the files in the previous step. The WebLOAD Analytics database is created.
4. Configure Postgre SQL to allow remote connections. For more information, see *Configuring Postgre SQL to Allow Remote Database Connections* on page 12.
5. Configure the relevant WebLOAD Analytics clients to work with the remote database. For more information, see *Configuring Clients to Work with the Remote Database* on page 13.

## Configuring Postgre SQL to Allow Remote Database Connections

For WebLOAD Analytics clients to work with the remote database, you must perform the following configuration steps on the host machine.

### To configure a remote database connection through Postgre SQL:

1. Run **Start > PostgreSql 8.3 > PgAdmin III**. The PgAdmin III application opens.
2. Edit the `postgresql.conf` file, as follows:
  - a. Select **File > Open**.
  - b. Browse to `C:\program files\Postgres\Data\`, select `postgresql.conf`, and click **Open**. The `postgresql.conf` configuration file opens.
  - c. Change the value of `listen_address` to `*`. This configures the server to listen to all addresses.
  - d. Enable the value and save the file.
3. Edit the `Pg_hba.conf` file, as follows:
  - a. Select **File > Open**.
  - b. Browse to `C:\program files\Postgres\Data\`, select `Pg_hba.conf`, and click **Open**. The `Pg_hba.conf` configuration file opens.
  - c. Add a new entry with the following parameters:



- Type = host
  - Database = all
  - User = all
  - IP address = <IP subnet mask>.0.1.1/24, where <IP subnet mask> is your organization's IP subnet mask.
  - Method = md5
- d. Enable the entry and save the file.

## Configuring Clients to Work with the Remote Database

To configure a remote database connection through Postgre SQL:

1. Open WebLOAD Analytics on the client machine.
2. Select **Window** ► **Preferences** ► **Database**.
3. Enter the server's IP address and name in the Database host name field.
4. Click **OK**.

---

## Installing Third Party Software for Server-side Monitoring

WebLOAD Console provides a Performance Measurements Manager (PMM) for monitoring the performance of various data sources such as server-side applications, databases, stream technology, system, and Web server measurements in real-time while your test is running.

Some data sources require initial configuration to enable monitoring by the PMM. For more information, see the *Enabling Data Sources Monitoring* section in the *WebLOAD Console User's Guide*.



## Installing WebLOAD for Linux

This chapter contains the instructions for installing the WebLOAD Load Engine on a machine running a Linux operating system.

---

### Installing the WebLOAD Load Engine for Linux

To install the WebLOAD Load Engine on your system:

1. Select or create a directory for installing the WebLOAD Load Engine. This directory will be referred to as the working directory.
2. Download the `WebLOAD-linux.version.tar.gz` compressed file from a server to the working directory.
3. Uncompress and extract the `tar` file in the working directory using the following command:

```
tar -zxvf WebLOAD-linux-version.tar.gz
```

4. Change directories by typing the following:

```
cd radview/webload<version number>/linux/bin
```

5. Run setup by typing the following:

```
./setup
```

During the setup process, the `webload.ini` configuration file is created.

6. When prompted, enter the path to the Java runtime libraries. The default path to the libraries is displayed. If you are working with a different version of Java, enter the path of the libraries using the following:

```
/usr/java/jre/lib/i386/server:/usr/java/jre/lib/i386/native-threads
```

The path information is stored in the `LD_LIBRARY_PATH` variable.



**Note:** The directories containing the Java libraries are separated with a colon (:).



**Important:** The WebLOAD Load Generator will not function properly without the correct paths for the Java libraries.

---

## Running the Load Engine on Linux

When running the Load Engine on Linux, Load Engine runs with TestTalk. TestTalk enables communication between the different components of the WebLOAD module. When running the Load Generator through Linux you generally need to connect with other WebLOAD modules running on a remote Windows machine (for example WebLOAD Console). To connect with these remote modules, you must run TestTalk. Once TestTalk is running, you can access the remote WebLOAD modules. The remote module then initiates the communication with TestTalk and then TestTalk loads the Load Generator.



**Note:** If the Load Generator is running and TestTalk is not running, the remote WebLOAD application will not be able to access the Load Generator.

### To run TestTalk on your system:

1. Open the `linux/bin` directory within your working directory by typing the following:

```
cd <working-directory>/linux/bin
```

2. Run TestTalk by typing the following:

```
./starttestalk
```

TestTalk starts running.

### To stop running TestTalk:

- From the `linux/bin` directory, run `./stoptesttalk`

---

## Installing Third Party Software for Server-side Monitoring

WebLOAD Console provides a Performance Measurements Manager (PMM) for monitoring the performance of various data sources such as server-side applications, databases, stream technology, system, and Web server measurements in real-time while your test is running.

Some data sources require initial configuration to enable monitoring by the PMM. For more information, see the *Enabling Data Sources Monitoring* section in the *WebLOAD Console User's Guide*.

# Registering and Updating the WebLOAD License

Your WebLOAD license must be registered before you can start working with WebLOAD. WebLOAD licenses that have expired must also be renewed or updated before you can continue working with WebLOAD. When installing a new major or minor version of WebLOAD, make sure that you have an adequate license for that specific version. All license registration and updating is accomplished through the Update License dialog box.

You can register and update your WebLOAD license either through an Update License application, or through the Command Line Interface.

---

## License administration through the UI

### Standard License Registration

To open the Update License dialog box:

- At the time of WebLOAD installation, when the WebLOAD Installation Wizard is finished, the License dialog box opens automatically,



**Note:** After a WebLOAD installation, you may be prompted to restart your computer before the Update License dialog box appears. In this case, the License dialog box will appear automatically after the computer restarts.

-Or-

At any other time, from the Windows desktop, select **Start > Programs > RadView > WebLOAD > Utilities > Update License**.

The License dialog box includes the following sections:

- License Details
- Update License

These sections are used to register and update your WebLOAD authorization license information.

**To complete or update your license registration:**

1. If you are registering a new license after an initial WebLOAD installation, access the Update License dialog box. The Update License dialog box is opened automatically after a successful WebLOAD installation is completed.

-Or-

If you are updating your license registration after your current license has expired, from the Windows desktop, select **Start > Programs > RadView > WebLOAD > Utilities > Update License**.

The Update License dialog box appears.

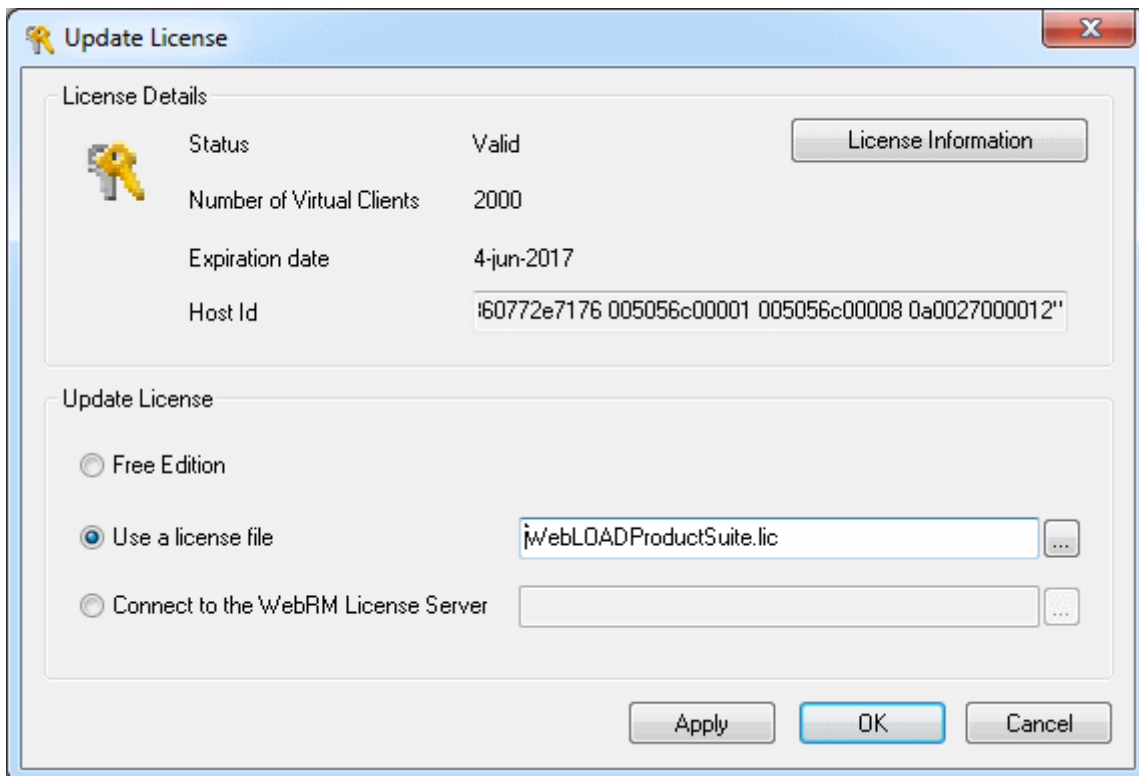


Figure 2: Update License Dialog Box

2. Create an email message with the following information:
  - a. Copy the Host ID displayed in the text box into the email.
  - b. Add your name, company, address, and phone number to the email message.
3. Send the email to [license@radview.com](mailto:license@radview.com).  
A WebLOAD license file (\*.lic) will be sent to you.

4. Select **Start > Programs > RadView > WebLOAD > Utilities > Update License** to open the Update License dialog box and install the license key.
5. By default, the **Use a license file** radio button is selected. This assumes that your license file is located on your local computer system.

For information on installing a floating license, or connecting to a license server, see *WebRM Server* (on page 20).

For information on installing a license for a free edition of WebLOAD, see *Free Edition License* (on page 19).

6. Click the browse button next to the **Use a license file** text box to browse to the location of the license (\*.lic) file sent to you by a RadView representative.
7. Select the correct license file and click **Open** to return to the Update License dialog box.
8. Click **OK** to load the new license.

If the license registration was successful, a message box appears indicating a successful license update.

You can now begin working with WebLOAD.



**Note:** After loading the license, you can optionally click **License Information** to view the license's full details.

If the license registration was not successful, an error message appears.

If you are not able to successfully register a valid license file, contact RadView Support for assistance.

## Free Edition License

You can install a free edition of WebLOAD, which provides 50 virtual clients, and is available for an unlimited period of time.

### To use the WebLOAD free edition:

1. After installing WebLOAD, the Update License dialog box opens,  
-Or-

To open the Update License dialog box manually, select **Start > Programs > RadView > WebLOAD > Utilities > Update License**.

The Update License dialog box appears.

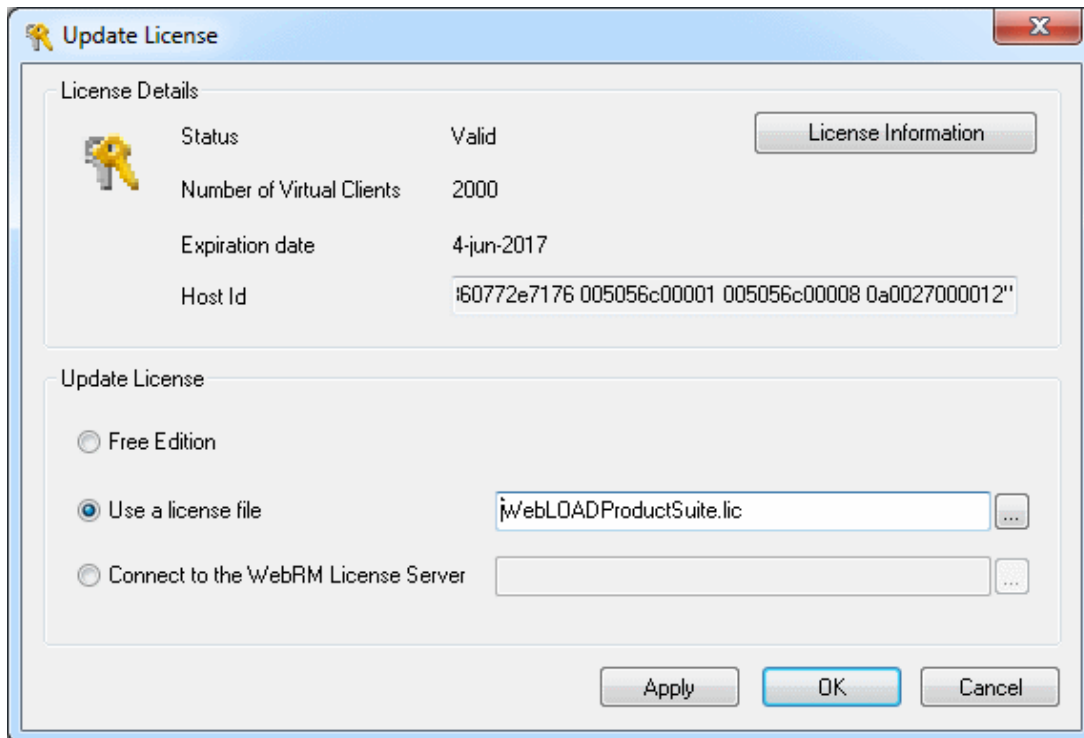


Figure 3: Update License Dialog Box

2. Select **Free Edition**.
3. Click **OK** or **Apply** to install the license for the free edition.

You can now begin working with the free edition of WebLOAD.

## WebRM Server

The WebRM Server is a stand-alone tool that manages all resource distribution to WebLOAD Console, which is the machine used to run loads in a WebRM environment. It is the method that controls the number of users allowed to access the product concurrently.

WebRM for virtual clients is available and defined as a pool of virtual (probing) clients that can concurrently be used by members of a testing team and monitored by the WebRM Server.

During installation of the WebRM server, you are prompted for the WebRM file that defines:

- The number of concurrent applications for the WebLOAD Console.
- The number of concurrent Virtual and Probing Clients.

Installation also creates a FlexLM Service that controls the operation.



The WebRM Server displays a list of the number of resources (Virtual and Probing Clients) that the Console is using. The WebRM Server enables a testing team to share resources.

This section describes how to connect to the WebRM Server and how to view the license details.

## Connecting to the WebRM Server

### To connect to the WebRM Server:

1. After installing WebLOAD, the Update License dialog box opens,  
-Or-

To open the Update License dialog box manually, select **Start > Programs > RadView > WebLOAD > Utilities > Update License**.

The Update License dialog box appears.

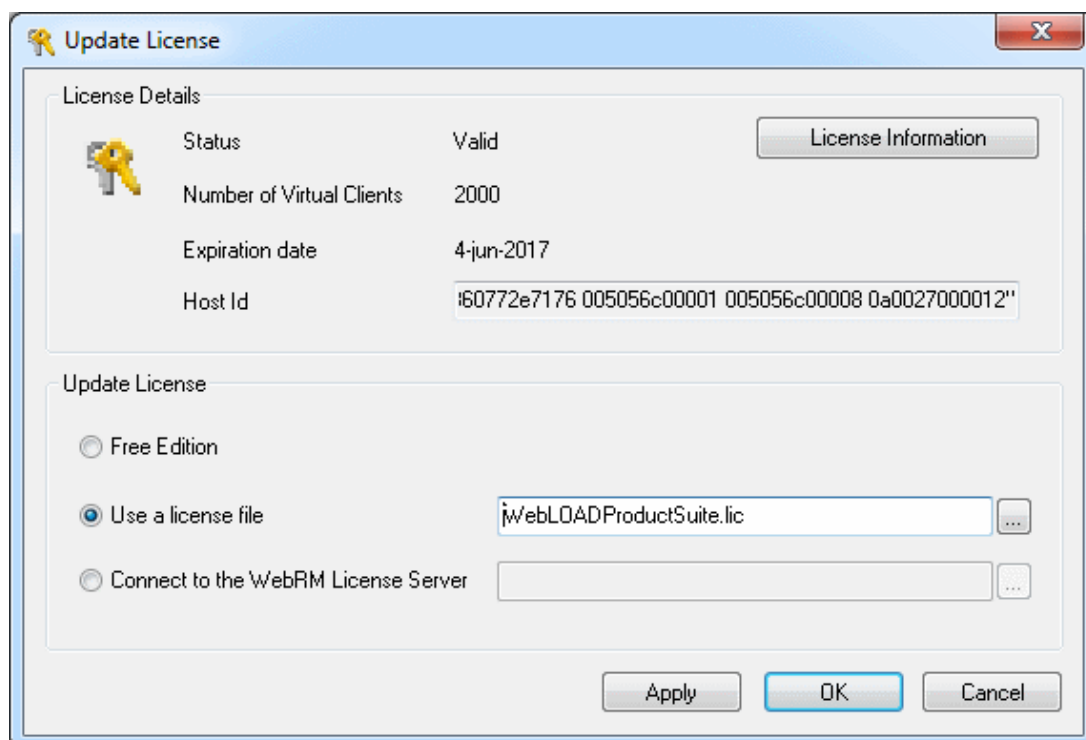


Figure 4: Update License Dialog Box – WebRM Server Installation

2. Select **Connect to the WebRM License Server**.
3. Click the **Browse** button and select the machine where WebRM is installed.
4. Click **OK**.

A connection to the selected license server is attempted.

- If the connection is successful, a success message appears.
- If the connection is not successful, a failure message appears.

### **Viewing License Details**

After selecting the license server, you can view the current license details in the License Details section of the Update License dialog box.

---

## **License administration through the Command Line Interface**

You can register or upload a WebLOAD license through a command line interface. You can enter the `wlUpdateLicenseApplicationCmd` command into a batch file or into an external script to automatically launch a WebLOAD License action, without user intervention, using the parameters you specify.

For a full description of the command, refer to the *WebLOAD™ Automation Guide*.

# Configuring Connection to the Oracle Database using WebLOAD

Connecting to the Oracle Database using WebLOAD requires that you install the Oracle Data Access Components (ODAC) on your computer. For information on ODAC, refer to the appropriate Oracle documentation.



**Note:** You need to be assigned a valid username and user privileges for Oracle so that you can connect to the Oracle database.

The following procedure is confirmed to work with Oracle Database version 11g, and is also expected to work with Oracle Database version 10g.

## To configure your computer to enable connection to the Oracle database using WebLOAD:

1. Navigate to `$ORACLE_HOME\NETWORK\ADMIN`.
2. Open `tnsnames.ora` for editing.



**Note:** If `tnsnames.ora` does not exist, create it.

The default content is as follows:

```
<tns_name> =
  (DESCRIPTION =
    (ADDRESS = (PROTOCOL = TCP) (HOST = <host or ip>) (PORT = 1521))
    (CONNECT_DATA =
      (SERVER = DEDICATED)
      (SERVER_NAME = <instance_name>)
    )
  )
```

3. Make the following definitions in the file:

`tns_name = <tns name configured in the listener on the server (default orcl)>`

`host = <hostname or IP address of the server>`

`instance name = <instance configured on the server (default orcl)>`

Log out and log in, or restart, to activate the environmental variables.



## Uninstalling WebLOAD

When you uninstall WebLOAD, you are prompted to remove PostgreSQL 8.3, which is used to manage the WebLOAD Analytics database. RadView Software recommends that you keep PostgreSQL 8.3 installed in order to maintain all the information stored in the database.

### To uninstall WebLOAD:

1. Close all WebLOAD modules including TestTalk.
2. Close all browser windows that are open.
3. Select **Start > Settings > Control Panel**.
4. Double-click the **Add/Remove Programs** icon.
5. Click the **Change or Remove Programs** tab.
6. Click **Radview WebLOAD Professional**, and then click **Change/Remove**.

The Uninstall Wizard appears. Once the uninstall procedure is complete, you may be prompted to restart your machine.



**Note:** Uninstalling WebLOAD removes all the WebLOAD program file directories, including all the WebLOAD installation files. User files that are copied into these directories (such as user-defined extensions) are not deleted. WebLOAD load templates, load sessions, and script files are not removed – they can be used with all WebLOAD upgrades.



**Caution:** Close TestTalk and all browser windows before uninstalling WebLOAD. Failure to close TestTalk and all browser windows results in outdated files remaining on your disk, which could adversely affect future installations of the program.

### To uninstall WebRM:

1. Select **Start > Settings > Control Panel**.
2. Double-click the **Add/Remove Programs** icon.
3. Click the **Add or Remove Programs** tab.
4. Click **RadView WebRM**, and then click **Change/Remove**.

The Uninstall Wizard appears. The uninstall procedure is completed following a confirmation request.

# Index

## C

- Configuring
  - to Connect to the Oracle Database ▪ 23
- Configuring WebLOAD Analytics database ▪ 11
- Connecting to the Floating License Server ▪ 21

## D

- Database
  - installing and configuring ▪ 11

## F

- Floating license details ▪ 22
- Floating License Server ▪ 20
- Free edition ▪ 19

## I

- Installing
  - WebLOAD Analytics database ▪ 11
  - WebLOAD for Linux ▪ 15
  - WebLOAD for Windows ▪ 7
  - WebRM ▪ 9
- Introduction ▪ 1

## L

- License registration and update ▪ 17
  - using CLI command ▪ 22
- Linux
  - installing WebLOAD ▪ 15
  - running Load Engine ▪ 16
  - WebLOAD load machine requirements ▪ 6

## O

- Online Help ▪ 4
- Oracle Database
  - Configuring to Connect ▪ 23

## P

- Platform requirements
  - Linux ▪ 6

## R

- Registering WebLOAD license ▪ 17
  - using CLI command ▪ 22
- Requirements, system ▪ 5
- Running
  - Load Engine on Linux ▪ 16

## S

- Standard License Registration ▪ 17
- System Requirements ▪ 5

## T

- Technical Support ▪ 4
- Technical Support Website ▪ 4
- Typographical Conventions ▪ 3

## U

- Uninstalling
  - WebLOAD ▪ 25
  - WebRM ▪ 25
- Updating WebLOAD license ▪ 17
  - using CLI command ▪ 22
- Upgrading WebLOAD ▪ 10

## V

- Viewing license details ▪ 22

## W

- WebLOAD Analytics database
  - configuring ▪ 11
  - installing ▪ 11
- WebLOAD Documentation ▪ 1
- WebRM
  - connect to ▪ 21
  - floating license ▪ 20
  - installing ▪ 9
  - uninstalling ▪ 25
- Where to Get More Information ▪ 4
- Windows Platforms ▪ 5