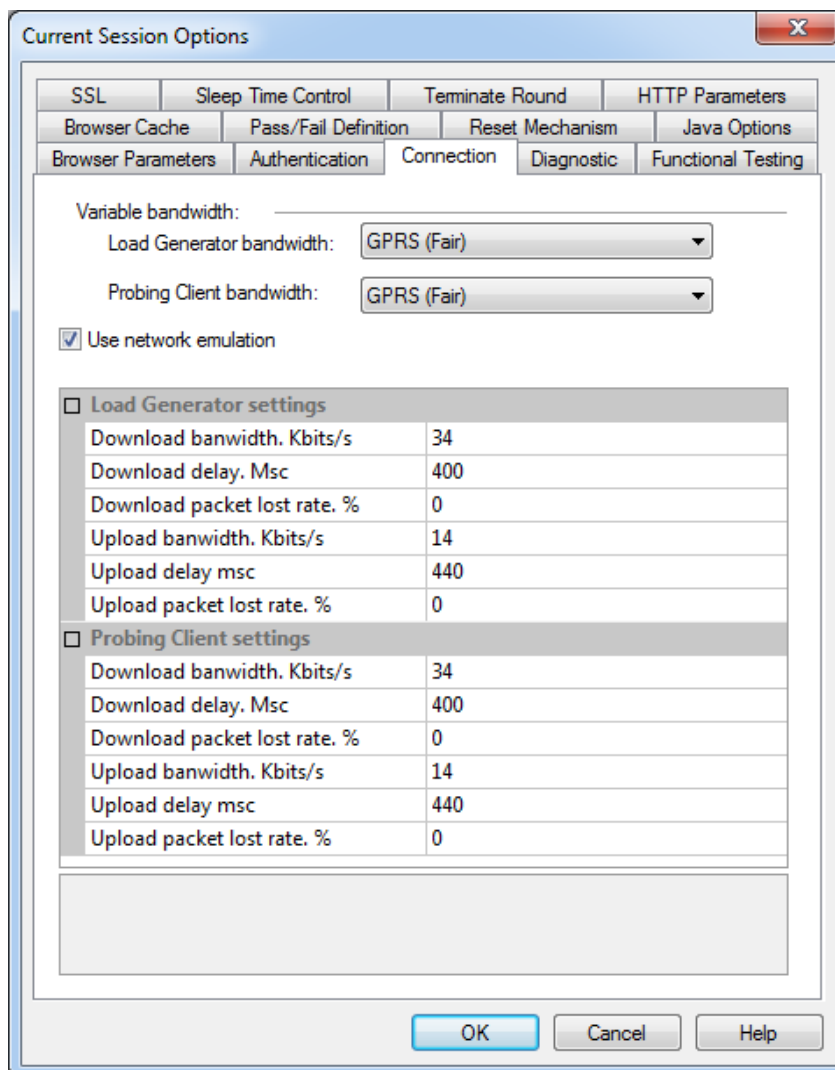


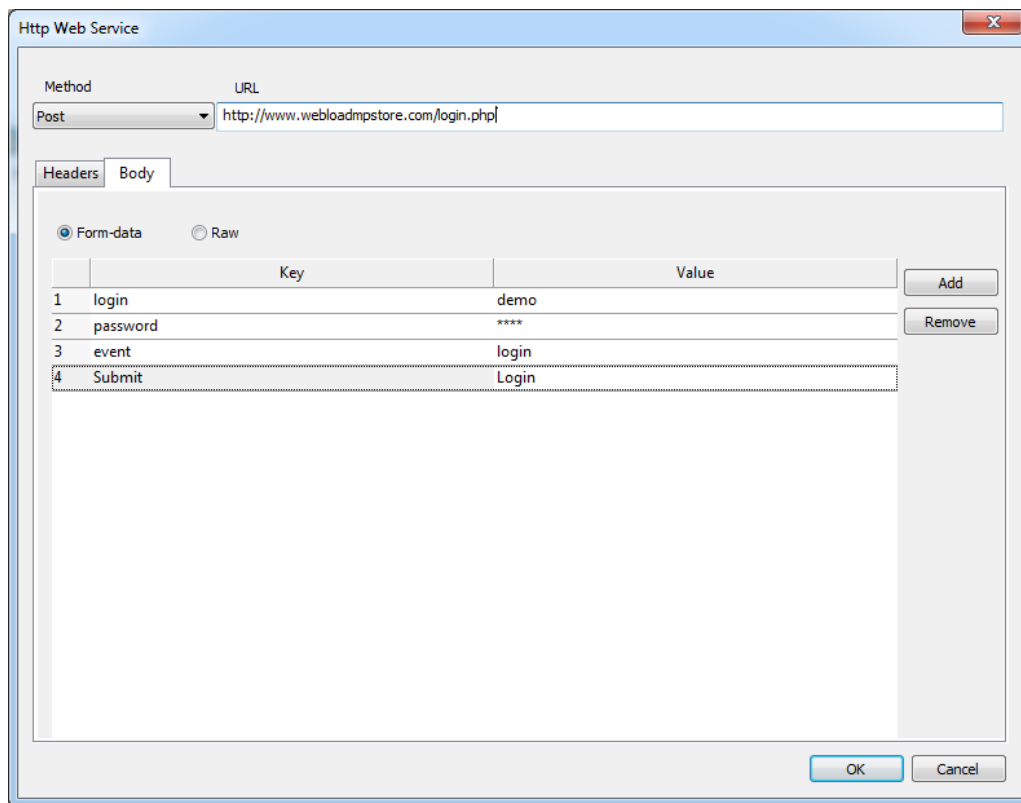
WebLOAD 10.5 - What's New?

Enhanced Capabilities and Features

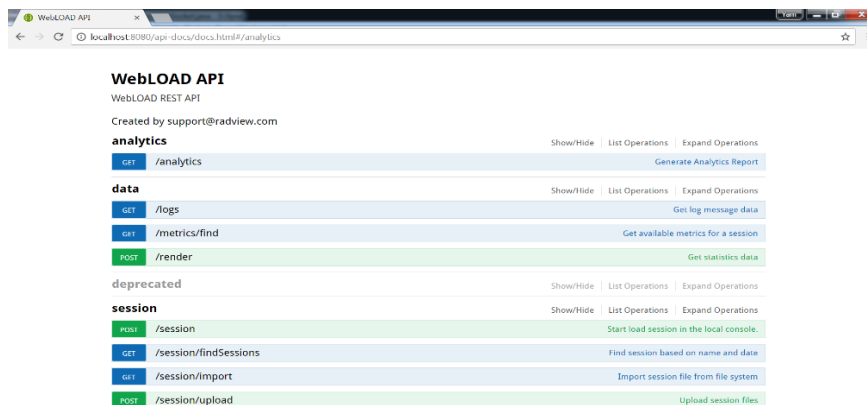
- Network Emulation** - WebLOAD 10.5 introduces Advanced Network Emulation. In addition to controlling the bandwidth/connection speed as in previous releases, you are able to control upload/download bandwidth, latency/delay, and packet loss. WebLOAD lets you control this kind of emulation at several levels. You can set these numbers to all of your virtual users, specify them for specific load generator/s, control your mix of agendas, or even a specific virtual user. This gives you the ability to simulate different users, each reaching your server from a different network.



- **HTTP Web Services** - WebLOAD 10.5 allows you to create Web Services calls created manually via GUI, in addition to the existing recording option, or coding options. Any HTTP method or header is supported. To use this new option, a new building box is added to the IDE toolbox dedicated to HTTP Web Services.



- **WebLOAD Open API** – WebLOAD 10.5 introduces a new REST Open API. With this new API, you can remotely activate a test, remotely create Analytics Reports and you can access any statistics that WebLOAD saves during a test.



- **Nagios Integration** – You can collect statistics measurements from Nagios using the standard Performance Measurements Manager (PMM). This integration allows you to correlate any server information that Nagios is contributing to your test during your test analysis phase.
- **IBM MQ** - You can load directly your IBM MQ via a new building block dedicated to IBM MQ.
- **Load Generator Resources Statistics** - WebLOAD 10.5 collects the LG resources statistics by default for both Windows and Linux. It collects the Load Generator Machine's free memory, CPU, and the CPU of the Load Generators processes. You can use these statistics in order to analyze your LG capacity.

