



Professional

# Installation Guide

Version 8.4



The software supplied with this document is the property of RadView Software and is furnished under a licensing agreement. Neither the software nor this document may be copied or transferred by any means, electronic or mechanical, except as provided in the licensing agreement. The information in this document is subject to change without prior notice and does not represent a commitment by RadView Software or its representatives.

*WebLOAD Installation Guide*

© Copyright 2008 by RadView Software. All rights reserved.

June, 2008, RadView Publication Number WL-PRO-0608-ING83

WebLOAD, TestTalk, Authoring Tools, ADL, AppletLoad, and WebExam, are trademarks or registered trademarks of RadView Software IBM, and OS/2 are trademarks of International Business Machines Corporation. Microsoft Windows, Microsoft Windows 95, Microsoft Windows NT, Microsoft Word for Windows, Microsoft Internet Explorer, Microsoft Excel for Windows, Microsoft Access for Windows and Microsoft Access Runtime are trademarks or registered trademarks of Microsoft Corporation. SPIDERSESSION is a trademark of NetDynamics. UNIX is a registered trademark of AT&T Bell Laboratories. Solaris, Java and Java-based marks are registered trademarks of Sun Microsystems, Inc. HP-UX is a registered trademark of Hewlett-Packard. SPARC is a registered trademark of SPARC International, Inc. Netscape Navigator and LiveConnect are registered trademarks of Netscape Communications Corporation. Any other trademark name appearing in this book is used for editorial purposes only and to the benefit of the trademark owner with no intention of infringing upon that trademark.

| <b>For product assistance or information, contact:</b>  |   |
|---|---|
| Toll free in the US:  | 1-888-RadView   |
| Fax:  | +1-908-864-8099   |
| World Wide Web:   | <a href="http://www.RadView.com">www.RadView.com</a>  |
| <b>North American Headquarters:</b>   | <b>International Headquarters:</b>  |
| RadView Software Inc.<br>991 Highway 22 West, Suite 200<br>Bridgewater, NJ 08807<br>Email: <a href="mailto:info@RadView.com">info@RadView.com</a><br>Phone: 908-526-7756<br>Fax: 908-864-8099<br>Toll Free: 1-888-RadView | RadView Software Ltd.<br>14 Hamelacha Street, Park Afek<br>Rosh Haayin, Israel 48091<br>Email: <a href="mailto:info@RadView.com">info@RadView.com</a><br>Phone: +972-3-915-7060<br>Fax: +972-3-915-7683 |

# Table of Contents

|   |           |
|---|-----------|
| <b>Chapter 1. Introduction .....</b>                                | <b>1</b>  |
| WebLOAD Documentation.....  | 1         |
| Typographical Conventions.....                                      | 2         |
| Where to Get More Information.....                                  | 3         |
| Online Help .....   | 3         |
| WebLOAD Open Source Community Website .....                         | 3         |
| Technical Support Website.....                                      | 4         |
| Technical Support.....  | 4         |
| <b>Chapter 2. System Requirements .....</b>                         | <b>5</b>  |
| Windows Platforms.....  | 5         |
| Linux Platforms (for WebLOAD Load Machines).....                    | 6         |
| Solaris Platforms (for WebLOAD Load Machines) .....                 | 6         |
| <b>Chapter 3. Installing WebLOAD for Windows.....</b>               | <b>9</b>  |
| Installing WebLOAD for Windows .....                                | 9         |
| Installing WebRM.....   | 10        |
| Upgrading WebLOAD.....  | 11        |
| Installing and Configuring the WebLOAD Analytics Database.....      | 11        |
| Creating the Database when Postgre SQL is Already Installed.....    | 11        |
| Installing and Configuring the Database on a Dedicated Machine..... | 12        |
| Configuring Postgre SQL to Allow Remote Database Connections.....   | 12        |
| Configuring Clients to Work with the Remote Database .....          | 13        |
| <b>Chapter 4. Installing WebLOAD for Linux.....</b>                 | <b>15</b> |
| Installing the WebLOAD Load Engine for Linux .....                  | 15        |
| Running the Load Engine on Linux.....                               | 16        |

|   |           |
|---|-----------|
| Running the Load Engine with TestTalk.....  | 16        |
| Running the Load Generator in StandAlone Mode.....                                | 18        |
| <b>Chapter 5. Registering and Updating the WebLOAD License.....</b>               | <b>19</b> |
| Standard License Registration .....   | 19        |
| WebRM Server .....  | 23        |
| Connecting to the WebRM Server .....  | 24        |
| <b>Chapter 6. Uninstalling WebLOAD .....</b>                                      | <b>27</b> |
| <b>Chapter 7. Installing Third Party Software for Server-side Monitoring.....</b> | <b>29</b> |
| Installing SNMP .....   | 29        |
| Installing SNMP Service on a Windows 2000 Platform .....                          | 29        |
| Installing SNMP for WebLogic.....   | 30        |
| Installing SNMP for ORACLE .....  | 31        |
| Setting Up JMX for Application Server Monitoring .....                            | 31        |
| Setting Up JMX Client for WebSphere.....  | 31        |
| Setting Up the JMX Client for JBoss .....   | 32        |
| Setting Up JMX Client for Tomcat.....   | 32        |
| Setting Up JMX Client for WebLogic.....   | 33        |
| Installing WAS for WebSphere.....   | 33        |
| <b>Index.....</b>   | <b>35</b> |

# Introduction

Welcome to WebLOAD Professional, the premier performance, scalability, and reliability testing solution for internet applications.

WebLOAD is easy to use and delivers maximum testing performance and value. WebLOAD verifies the scalability and integrity of internet applications by generating a load composed of Virtual Clients that simulate real-world traffic. Probing Clients let you refine the testing process by acting as a single user that measures the performance of targeted activities, and provides individual performance statistics of the internet application under load.

This section provides a brief introduction to WebLOAD technical support, including both documentation and online support.

---

## WebLOAD Documentation

WebLOAD is supplied with the following documentation:

### **WebLOAD™ Installation Guide**

Instructions for installing WebLOAD and its add-ons.

### **WebLOAD™ IDE User's Guide**

Instructions for recording, editing, and debugging load test Agendas to be executed by WebLOAD to test your Web-based applications.

### **WebLOAD™ Console User's Guide**

A guide to using WebLOAD console, RadView's load/scalability testing tool to easily and efficiently test your Web-based applications. This guide also includes a quick start section containing instructions for getting started quickly with WebLOAD using the RadView Software test site.

### **WebLOAD™ Analytics User's Guide**

Instructions on how to use WebLOAD Analytics to analyze data and create custom, informative reports after running a WebLOAD test session.

### **WebRM™ User's Guide**

Instructions for managing testing resources with the WebLOAD Resource Manager.

### **WebLOAD™ Scripting Guide**

Complete information on scripting and editing JavaScript Agendas for use in WebLOAD and WebLOAD IDE.

### **WebLOAD™ JavaScript Reference Guide**

Complete reference information on all JavaScript objects, variables, and functions used in WebLOAD and WebLOAD IDE test Agendas.

### **WebLOAD™ Extensibility SDK**

Instructions on how to develop extensions to tailor WebLOAD to specific working environments.



The guides are distributed with the WebLOAD software in online help format. The guides are also supplied as Adobe Acrobat files. View and print these files using the Adobe Acrobat Reader. Install the Reader from the Adobe website <http://www.adobe.com>.

## **Typographical Conventions**

Before you start using this guide, it is important to understand the terms, icons, and typographical conventions used in the documentation.

The following icons appear next to the text to identify special information.

*Table 1: Icon Conventions*

| <b>Icon</b>   | <b>Type of Information</b>  |
|---|---|
|  | Indicates a note.   |
|  | Indicates a feature that is available only as part of a WebLOAD Add-on. |

The following kinds of formatting in the text identify special information.

Table 2: Typographical Conventions

| Formatting convention | Type of Information   |
|-----------------------|---|
| <b>Special Bold</b>   | Items you must select, such as menu options, command buttons, or items in a list.   |
| <i>Emphasis</i>       | Use to emphasize the importance of a point or for variable expressions such as parameters.                                  |
| CAPITALS              | Names of keys on the keyboard. for example, SHIFT, CTRL, or ALT.  |
| KEY+KEY               | Key combinations for which the user must press and hold down one key and then press another, for example, CTRL+P or ALT+F4. |

## Where to Get More Information

This section contains information on how to obtain technical support from RadView worldwide, should you encounter any problems.

### Online Help

WebLOAD provides a comprehensive on-line help system with step-by-step instructions for common tasks.

You can press the **F1** key on any open dialog box for an explanation of the options or select **Help ► Contents** to open the on-line help contents and index.

### WebLOAD Open Source Community Website

The WebLOAD Open Source Community website at <http://www.webload.org> contains many sources of information for both WebLOAD users and developers:

- Forums
- Script Library
- Documentation
- How To docs
- FAQ
- Developer Wiki

## Technical Support Website

The technical support pages on our website contain:

- FAQ (Frequently Asked / Answered Questions).
- Agenda Center
- Documentation
- RadView's Product Resource Center, where you can find prepared test scripts, product information, and industry related news.
- <http://www.radview.com/support/index.asp>

## Technical Support

For technical support in your use of this product, contact:

| North American Headquarters   | International Headquarters   |
|---|--|
| e-mail: <a href="mailto:support@RadView.com">support@RadView.com</a><br>Phone: 1-888-RadView<br>(1-888-723-8439) (Toll Free)<br>908-526-7756<br>Fax: 908-864-8099 | e-mail: <a href="mailto:support@RadView.com">support@RadView.com</a><br>Phone: +972-3-915-7060<br>Fax: +972-3-915-7683 |



**Note:** We encourage you to use e-mail for faster and better service.

When contacting technical support please include in your message the full name of the product, as well as the version and build number.

# System Requirements

WebLOAD has the following system requirements. WebLOAD Console, WebLOAD IDE, WebLOAD Analytics, WebLOAD Probing Client, and WebRM can only be run on Windows platforms. WebLOAD Load Machines can be run on Windows, Solaris, and Linux platforms.

## Windows Platforms

Table 3: WebLOAD System Requirements

| Requirements         | WebLOAD Console, WebLOAD IDE, WebLOAD Analytics, WebLOAD Probing Client, and WebRM   | Load Machine   |
|----------------------|--|--|
| Computer / Processor | IBM-compatible PC (x86-32) with Pentium III 800 MHz (or higher) microprocessor   | IBM-compatible PC (x86-32) with Pentium III 800 MHz (or higher) microprocessor; Pentium 4 is recommended   |
| Operating System     | <ul style="list-style-type: none"> <li>Windows 2000 Professional</li> <li>Windows XP Pro (SP2)</li> <li>Windows Server 2003</li> </ul> | <ul style="list-style-type: none"> <li>Windows 2000 Server / Advanced Server</li> <li>Windows XP Pro (SP2)</li> <li>Windows Server 2003, Standard and Enterprise Editions</li> </ul> |
| Memory               | 512 MB RAM (minimum); 1 GB is recommended  | 512 MB RAM (minimum); 1 GB is recommended  |
| Free Disk Space      | 260 MB   | 260 MB   |

## Linux Platforms (for WebLOAD Load Machines)

Table 4: WebLOAD Load Machine System Requirements

| Requirements    | Load Machine  |
|-----------------|---|
| Hardware        | IBM-compatible PC (x86-32) with Pentium III 800 MHz (or higher) microprocessor; Pentium 4 is recommended  |
| Version         | <ul style="list-style-type: none"> <li>• Fedora Core 3 / 6</li> <li>• Red Hat Enterprise Linux 3 / 4 / 5</li> <li>• Java Runtime Environment (JRE) 1.5 or higher</li> </ul> |
| Free Disk Space | 175 MB  |
| Swap Space      | RAM*2   |
| Memory          | 256 MB RAM (minimum); 1 GB is recommended   |

## Solaris Platforms (for WebLOAD Load Machines)

The system requirements for the Solaris version for WebLOAD 8.x Load Machines will be published separately.



### Notes:

WebLOAD components in each major version will work with all other components of the same version, no matter what the minor revision number. WebLOAD components are not compatible with other components of a different version. For example, all components of WebLOAD Version 7.x will work with each other. Version 7.0, 7.1, etc, are all compatible with each other. However, components of Version 7.x are not compatible with components of Version 6.x or Version 5.x. Verify that the WebLOAD components have been upgraded to Version 7.x on all participating hosts. Running WebLOAD Console Version 7.x with an earlier version of Load Generator (running on different Hosts) may cause unexpected behavior.

Starting with WebLOAD 8.1, it is possible to install different versions of WebLOAD side-by-side on the same machine. Although this usage is not recommended, it is supported as it may be necessary in some cases. For example, you can install TestView 8.0 and WebLOAD 8.1 on the same machine. In such a case, each version has its own Start menu shortcuts and a different set of program files, directories, and settings. However, be sure not to execute components of different versions simultaneously. When you need to switch between the versions, verify that no RadView software processes are running.

The WebLOAD license file is limited to the computer system (machine) on which WebLOAD is initially installed. Before installing WebLOAD, make sure you are installing on the machine with which you intend to work.

When installing WebLOAD with Unicode support on a system running an English MS Windows, Japanese must be configured as the default Windows language.



# Installing WebLOAD for Windows

This chapter provides step-by-step instructions for installing WebLOAD on a PC running Windows 2000, Windows 2003, or Windows XP systems.

---

## Installing WebLOAD for Windows

When you install WebLOAD on your computer, the installation program asks you for the components to install. As part of the installation process, WebLOAD installs a database management system (PostgreSQL 8.2) for use with WebLOAD Analytics. For more information about PostgreSQL, refer to [www.postgresql-support.de](http://www.postgresql-support.de).

Install the WebLOAD components as follows:

- Install the full WebLOAD product (with or without WebLOAD Analytics) on computers that will be used to run the WebLOAD Console.
- Install only the Load Generator or the Probing Client software on a computer that will be a dedicated Load Machine. There is no need to install the full product on computers that will be used as Load Machines.

### To install WebLOAD on your system:

1. Browse to the location of the WebLOAD executable (\*.exe) installation file.
2. Double-click the file.

The WebLOAD Installation Wizard appears.

3. Follow the instructions on your screen.
4. When the Installation Wizard prompts for the component to install, select the desired component. For Load Machines and Probing Clients, select **Load Generator**.

5. When the Installation Wizard prompts for the installation method of TestTalk, select one of the following:
  - **Executable** – Installs TestTalk as an executable file.
  - **Service** – Installs TestTalk as a service. Since a service can be started automatically, this is especially useful for machines that serve only as Load Generators.



**Note:** The installation process is the same for Load Machines and Probing Clients.

When the WebLOAD installation is complete, the WebLOAD License dialog box automatically opens to complete the registration process. License registration is discussed in *Registering and Updating the WebLOAD License* (on page 19).

## Installing WebRM

### To install WebRM:

1. Browse to the location of the `WebRM-8.4.xxx.en.exe` installation file.
2. Double-click the file. The WebRM Installation Wizard appears.
3. The WebRM Installation Wizard displays the Choose Destination Location dialog box. This dialog box displays your HostID and enables you to browse to the location where you would like WebRM installed.



**Note:** If you have already received your WebRM License file, skip to step 7.

4. If you have not received your License file, copy the HostID displayed in the text box into an email, together with your name, company, address, and phone number. Send the email to [support@radview.com](mailto:support@radview.com).

A WebRM license file (`*.lic`) will be sent to you.

5. After receiving the file, save it on the hard drive of your WebRM machine.
6. Double-click the WebRM executable installation file to restart the installation process.
7. On the Choose Destination Location dialog box, browse to the location where you would like WebRM installed. By default, this location is `C:\Program Files\RadView\WebRM`.
8. Click **Next**.
9. The Select License dialog box appears. Browse to the location where you saved your WebRM license, select the file and click **Open**.

10. WebRM begins the installation. When the WebRM installation process is complete, a dialog box appears stating that the WebRM installation has completed successfully. Click **Finish**.

---

## Upgrading WebLOAD

### To upgrade WebLOAD:

1. Close TestTalk.
2. Close all browser windows that are open.
3. Uninstall the existing WebLOAD version.

For instructions on the uninstall procedure, see *Uninstalling WebLOAD* (on page 27).

4. Install the new version of WebLOAD.

For installation instructions, see *Installing WebLOAD for Windows* (on page 9).

---

## Installing and Configuring the WebLOAD Analytics Database

WebLOAD stores information from Load Sessions in a Postgre SQL database for use with WebLOAD Analytics. You can install Postgre SQL and the WebLOAD Analytics database during the WebLOAD installation or manually after WebLOAD has already been installed. You might want to perform manual installation in the following situations:

- If Postgre SQL is already installed on your machine and you only need to create the WebLOAD Analytics database. For instructions, refer to *Creating the Database when Postgre SQL is Already Installed* on page 11.
- If you want to use a different machine as the database server and have several WebLOAD Analytics applications connect to the database. For instructions, refer to *Installing and Configuring the Database on a Dedicated Machine* on page 12.

### Creating the Database when Postgre SQL is Already Installed

If Postgre SQL is already installed on your machine, you do not have to reinstall it during the WebLOAD installation. However, you must complete the following steps in order to create the WebLOAD Analytics database in Postgre SQL so that it can be used by WebLOAD Analytics.

### To create the WebLOAD Analytics database after WebLOAD was installed:

- Run `deploy-database.bat` from the `C:\Program Files\RadView\WebLOAD\bin\database` folder.

## Installing and Configuring the Database on a Dedicated Machine

You can run the PostgreSQL database using a dedicated machine with several WebLOAD Analytics client applications.

### To install and configure the database on a dedicated machine:

1. Install PostgreSQL.



**Note:** It is recommended to install PostgreSQL Version 8.2. You can download the application from <http://www.postgresql.org/download/> and install it using its default installation settings.

2. Copy all the files from the `C:\Program Files\RadView\WebLOAD\bin\database` directory to a temporary folder on the dedicated server.
3. Run `deploy-database.bat` from the temporary folder to which you copied the files in the previous step. The WebLOAD Analytics database is created.
4. Configure PostgreSQL to allow remote connections. For more information, see *Configuring PostgreSQL to Allow Remote Database Connections* on page 12.
5. Configure the relevant WebLOAD Analytics clients to work with the remote database. For more information, see *Configuring Clients to Work with the Remote Database* on page 13.

## Configuring PostgreSQL to Allow Remote Database Connections

For WebLOAD Analytics clients to work with the remote database, you must perform the following configuration steps on the host machine.

### To configure a remote database connection through PostgreSQL:

1. Run **Start** ► **PostgreSQL 8.2** ► **PgAdmin III**. The PgAdmin III application opens.
2. Edit the `postgresql.conf` file, as follows:
  - a. Select **File** ► **Open**.

- b. Browse to `C:\program files\Postgres\Data\`, select `postgresql.conf`, and click **Open**. The `postgresql.conf` configuration file opens.
  - c. Change the value of `listen_address` to `*`. This configures the server to listen to all addresses.
  - d. Enable the value and save the file.
3. Edit the `Pg_hba.conf` file, as follows:
    - a. Select **File** ► **Open**.
    - b. Browse to `C:\program files\Postgres\Data\`, select `Pg_hba.conf`, and click **Open**. The `Pg_hba.conf` configuration file opens.
    - c. Add a new entry with the following parameters:
      - Type = host
      - Database = all
      - User = all
      - IP address = `<IP subnet mask>.0.1.1/24`, where `<IP subnet mask>` is your organization's IP subnet mask.
      - Method = md5
    - d. Enable the entry and save the file.

## Configuring Clients to Work with the Remote Database

**To configure a remote database connection through Postgre SQL:**

1. Open WebLOAD Analytics on the client machine.
2. Select **Window** ► **Preferences** ► **Database**.
3. Enter the server's IP address and name in the Database host name field.
4. Click **OK**.



# Installing WebLOAD for Linux

This chapter contains the instructions for installing the WebLOAD Load Engine on a machine running a Linux operating system.

---

## Installing the WebLOAD Load Engine for Linux

To install the WebLOAD Load Engine on your system:

1. Select or create a directory for installing the WebLOAD Load Engine. This directory will be referred to as the working directory.
2. Download the `WebLOAD-linux.version.tar.gz` compressed file from a server to the working directory.
3. Uncompress and extract the `tar` file in the working directory using the following command:

```
tar -zxvf WebLOAD-linux-version.tar.gz
```

4. Change directories by typing the following:  

```
cd radview/webload<version number>/linux/bin
```
5. Run setup by typing the following:  

```
./setup
```

During the setup process, the `webload.ini` configuration file is created.

6. When prompted, enter a value for the `DISPLAY` variable. This is the IP address of the session's X server, followed by the screen address, in the following format: `<X server IP>:<screen address>`. If the X server is running on a local machine, press Enter and use the default option (`localhost:0`).



**Note:** If the `DISPLAY` variable is not valid, a message displays with the option to enter a new value or continue with the specified value. An incorrect value can be corrected later using the `./env_setup` utility in the `<working-directory>/linux/bin` directory before starting TestTalk.



**Important:** If the `DISPLAY` addresses are correct, but do not allow connections, the setup may freeze during the validity check it performs on the `DISPLAY` variable. In this case, press `Ctrl-C`. The setup script need not be rerun. Check the accuracy of the `DISPLAY` variable and use `./env_setup` to complete the installation.

- When prompted, enter the path to the Java runtime libraries. The default path to the libraries is displayed. If you are working with a different version of Java, enter the path of the libraries using the following:

```
/usr/java/jre/lib/i386/server:/usr/java/jre/lib/i386/native-threads
```

The path information is stored in the `LD_LIBRARY_PATH` variable.



**Note:** The directories containing the Java libraries are separated with a colon (:).



**Important:** The WebLOAD Load Generator will not function properly without the correct paths for the Java libraries.

- Change the value of the `TV_TOP` variable in the `webload.ini` configuration file from:

```
/home/loadtv/TS2004/linux8.0.5
```

to:

```
<path to working directory>
```

The Load Machine is installed.

---

## Running the Load Engine on Linux

When running the Load Engine on Linux, you can select one of the following methods:

- Running the Load Engine with TestTalk** – The standard method used when running the Load Engine on Linux, which enables you to connect to other WebLOAD modules.
- Running the Load Machine in standalone mode** – An alternative method, which can be used to run the Load Engine independently without being controlled by external WebLOAD modules.

### Running the Load Engine with TestTalk

TestTalk enables communication between the different components of the WebLOAD module. When running the Load Generator through Linux you generally need to connect with other WebLOAD modules running on a remote Windows machine (for

example WebLOAD Console). To connect with these remote modules, you must run TestTalk. Once TestTalk is running, you can access the remote WebLOAD modules. The remote module then initiates the communication with TestTalk and then TestTalk loads the Load Generator.

TestTalk references the DISPLAY and Java libraries paths variables that are defined during setup in the WebLOAD.ini configuration file to create the application environment. These variables can be modified using the ./env\_setup utility. When the utility is run, the default settings are displayed and can be modified, as required.



**Note:** If the Load Generator is running and TestTalk is not running, the remote WebLOAD application will not be able to access the Load Generator.

### To run TestTalk on your system:

1. Open the linux/bin directory within your working directory by typing the following:

```
cd <working-directory>/linux/bin
```

2. Type ./env\_setup.

This script prompts the user to set the DISPLAY and LD\_LIBRARY\_PATH environment variables:

- DISPLAY – Enter the IP address of the session's X server, followed by the screen address, as follows: 'your X server IP': 'screen address'.  
If you are running an X server on a local machine, enter 0 : 0.
- LD\_LIBRARY\_PATH – Specify the location of the shared library used by the WebLOAD engine.

You can use the env\_setup script's default path:

```
<working-directory>/linux/lib:<working-  
directory>/linux/syslib
```

3. Run TestTalk by typing the following:

```
./starttestalk
```

TestTalk starts running.

### To stop running TestTalk:

- From the linux/bin directory, run ./stoptesttalk

## Running the Load Generator in StandAlone Mode

The Load Generator has the option of being run in a standalone mode. During the standalone mode, the Load Generator works independently and is not controlled by the Console application.

### To run the Load Generator in standalone mode:

1. Open the `linux/bin` directory within your working directory by typing the following:

```
cd <working-directory>/linux/bin
```

2. Modify the `LD_LIBRARY_PATH` global variable by typing the following:

```
setenv LD_LIBRARY_PATH <path to working-  
directory>/linux/lib:<path to working-directory>/linux/syslib
```

3. Run the Load Generator application by typing the following:

```
./httpload128 test.js -r:10
```

Where:

- `test.js` is the specific Agenda that the load test is executing
- `r` is the execution rounds number

# Registering and Updating the WebLOAD License

Your WebLOAD license must be registered before you can start working with WebLOAD. WebLOAD licenses that have expired must also be renewed or updated before you can continue working with WebLOAD. When installing a new major or minor version of WebLOAD, make sure that you have an adequate license for that specific version. All license registration and updating is accomplished through the Update License dialog box.

---

## Standard License Registration

To open the Update License dialog box:

- At the time of WebLOAD installation, when the WebLOAD Installation Wizard is finished, the License dialog box opens automatically,



**Note:** After a WebLOAD installation, you may be prompted to restart your computer before the Update License dialog box appears. In this case, the License dialog box will appear automatically after the computer restarts.

-Or-

At any other time, from the Windows desktop, select **Start > Programs > RadView > WebLOAD > Utilities > Update License**.

The License dialog box includes three tabs:

- Host ID
- Select License
- License Information

These tabs are used to register and update your WebLOAD authorization license information.

## To complete or update your license registration:

1. If you are registering a new license after an initial WebLOAD installation, access the Update License dialog box. The Update License dialog box is opened automatically after a successful WebLOAD installation is completed.

-Or-

If you are updating your license registration after your current license has expired, from the Windows desktop, select **Start > Programs > RadView > WebLOAD > Utilities > Update License**.

2. Select the **Host ID** tab.

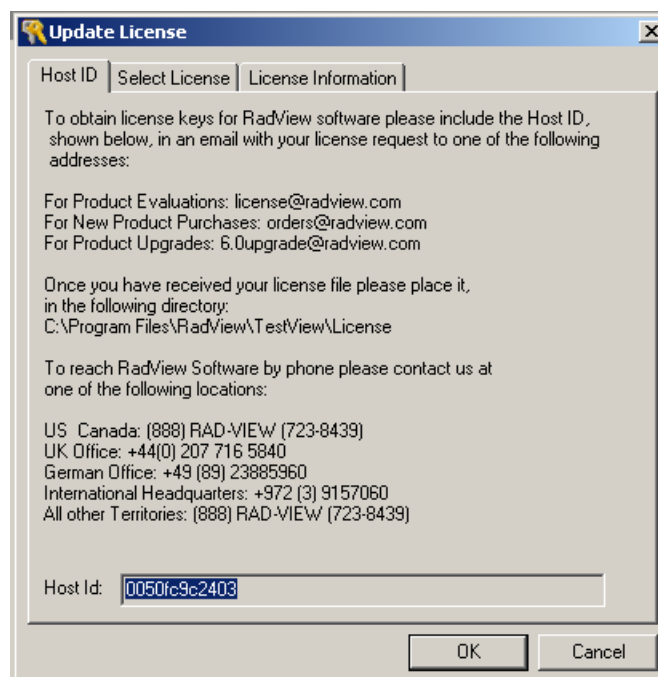


Figure 1: Host ID Tab

3. Create an email message with the following information:
  - e. Copy the Host ID displayed in the text box into the email.
  - f. Add your name, company, address, and phone number to the email message.
4. Send the email to [license@radview.com](mailto:license@radview.com).  
A WebLOAD license file (\*.lic) will be sent to you.
5. After receiving the file, save it to your hard drive in the following directory:  
C:\<WebLOAD Installation Directory>\License
6. Select **Start > Programs > RadView > WebLOAD > Utilities > Update License** to open the Update License dialog box and install the license key.

7. Select the **Select License** tab.

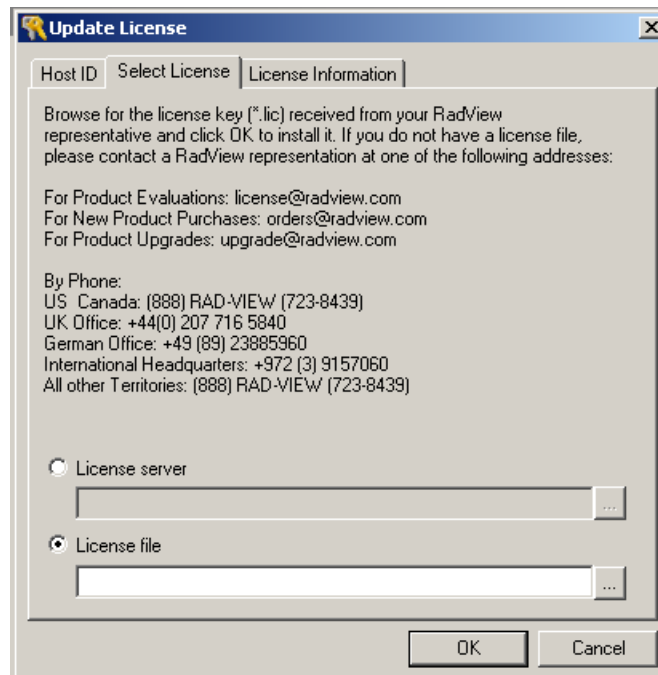
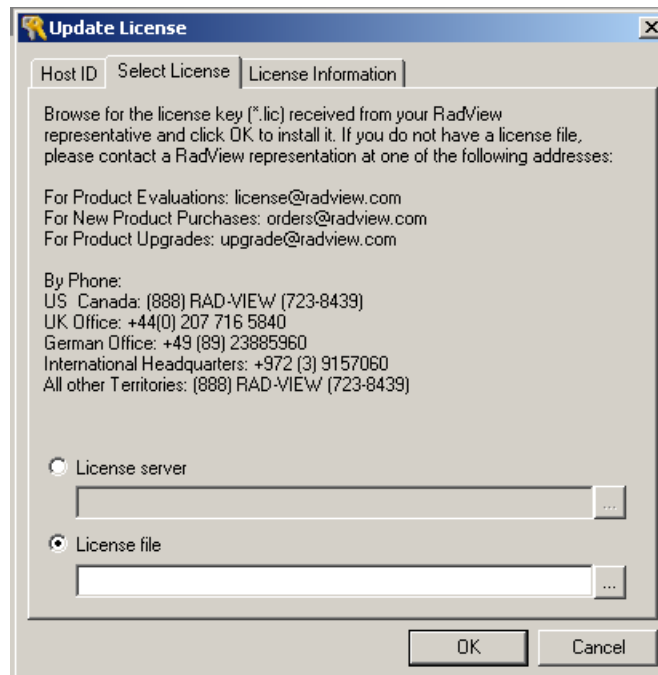


Figure 2: Select License Tab

8. By default, the License file radio button is selected. This assumes that your license file is located on your local computer system.

For information on installing a floating license, or connecting to a license server, see *WebRM Server* (on page 23).

9. Click the **Browse** button next to the License file text box to browse to the location of the license (\*.lic) file sent to you by a RadView representative.
10. Select the correct license file and click **Open** to return to the Update License dialog box.



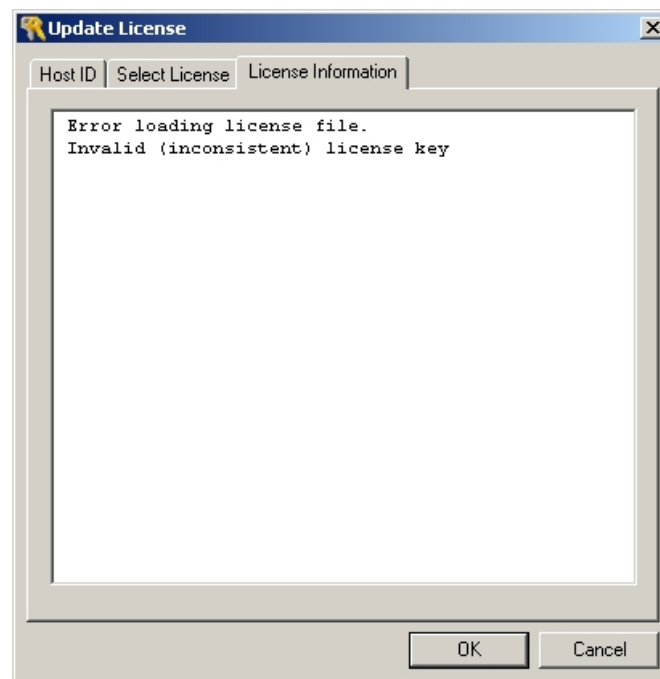
*Figure 3: Update License Dialog Box*

11. Click **OK** to load the new license.

If the license registration was successful, a message box appears indicating a successful license update.

You can now begin working with WebLOAD.

If the license registration was not successful, an error message appears in the License Information tab.



*Figure 4: License Update Error Message*

If you are not able to successfully register a valid license file, contact RadView Support for assistance.

---

## WebRM Server

The WebRM Server is a stand-alone tool that manages all resource distribution to WebLOAD Console, which is the machine used to run loads in a WebRM environment. It is the method that controls the number of users allowed to access the product concurrently.

WebRM for virtual clients is available and defined as a pool of virtual (probing) clients that can concurrently be used by members of a testing team and monitored by the WebRM Server.

During installation of the WebRM server, you are prompted for the WebRM file that defines:

- The number of concurrent applications for the WebLOAD Console.
- The number of concurrent Virtual and Probing Clients.

Installation also creates a FlexLM Service that controls the operation.

The WebRM Server displays a list of the number of resources (Virtual and Probing Clients) that the Console is using. The WebRM Server enables a testing team to share resources.

This section describes how to connect to the WebRM Server and how to view the license details.

## Connecting to the WebRM Server

### To connect to the WebRM Server:

1. After installing WebLOAD, the Update License dialog box opens, enabling you to select a valid license key,

-Or-

To open the Update License dialog box manually, select **Start > Programs > RadView > WebLOAD > Utilities > Update License**.

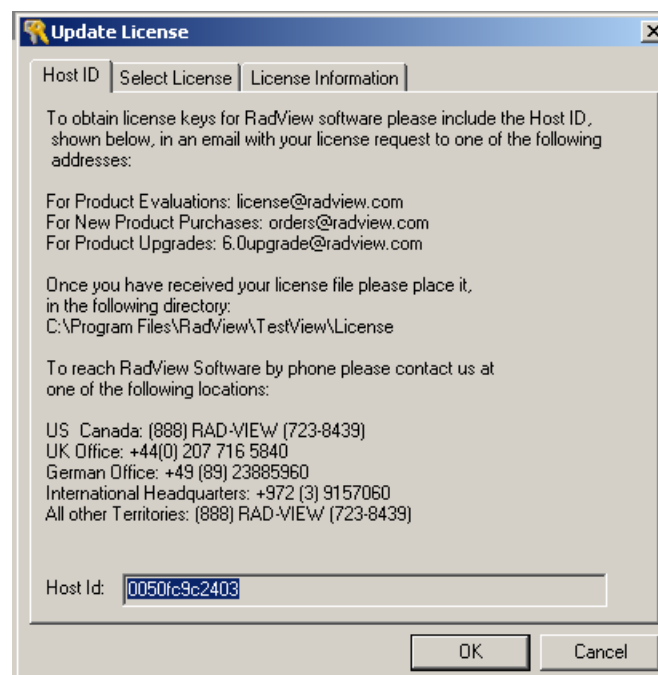


Figure 5: Update License Dialog Box

2. Select the **Select License** tab.

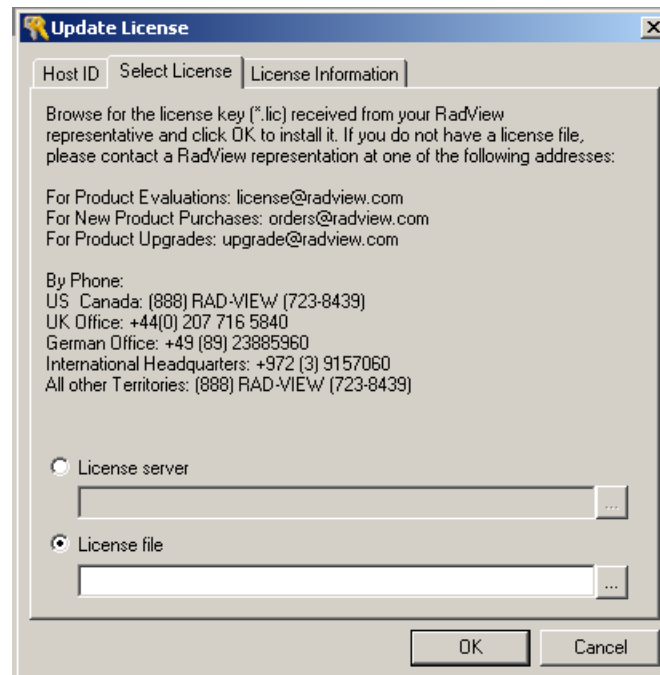


Figure 6: Select License Tab

3. Select **License server**.
4. Click the **Browse** button and select the machine where WebRM is installed.
5. Click **OK**.

A connection to the selected license server is attempted.

- If the connection is successful, a success message appears.
- If the connection is not successful, a failure message appears.

### **Viewing License Details**

After selecting the license server, you can view the current license details.

#### **To view license details:**

1. Select **Start** > **Programs** > **RadView** > **WebLOAD** > **Utilities** > **Update License**.
2. Select the License Information tab.

All of the current license information is displayed, including free resources, license features and user details.

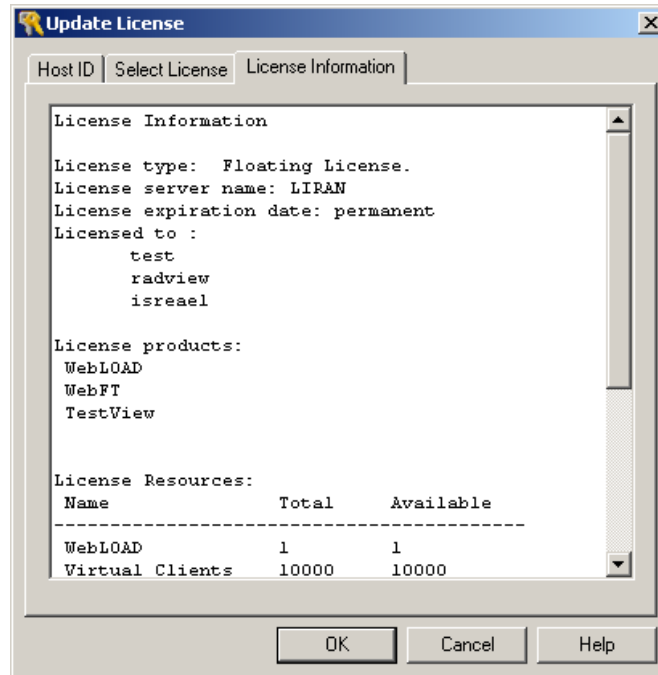


Figure 7: License Details

## Uninstalling WebLOAD

When you uninstall WebLOAD, you are prompted to remove PostgreSQL 8.2, which is used to manage the WebLOAD Analytics database. RadView Software recommends that you keep PostgreSQL 8.2 installed in order to maintain all the information stored in the database.

### To uninstall WebLOAD:

1. Close all WebLOAD modules including TestTalk.
2. Close all browser windows that are open.
3. Select **Start** > **Settings** > **Control Panel**.
4. Double-click the **Add/Remove Programs** icon.
5. Click the **Change or Remove Programs** tab.
6. Click **Radview WebLOAD Professional**, and then click **Change/Remove**.

The Uninstall Wizard appears. Once the uninstall procedure is complete, you may be prompted to restart your machine.



**Note:** Uninstalling WebLOAD removes all the WebLOAD program file directories, including all the WebLOAD installation files. User files that are copied into these directories (such as user-defined extensions) are not deleted. WebLOAD load templates, load sessions, and Agenda files are not removed – they can be used with all WebLOAD upgrades.



**Caution:** Close TestTalk and all browser windows before uninstalling WebLOAD. Failure to close TestTalk and all browser windows results in outdated files remaining on your disk, which could adversely affect future installations of the program.

### To uninstall WebRM:

1. Select **Start** > **Settings** > **Control Panel**.
2. Double-click the **Add/Remove Programs** icon.
3. Click the **Add or Remove Programs** tab.
4. Click **RadView WebRM**, and then click **Change/Remove**.

The Uninstall Wizard appears. The uninstall procedure is completed following a confirmation request.

# Installing Third Party Software for Server-side Monitoring

---

## Installing SNMP

Simple Network Management Protocol (SNMP) enables communication between systems in your load session. If SNMP service is installed on your system, it runs automatically in the background.

### Installing SNMP Service on a Windows 2000 Platform

To install SNMP service on Windows 2000:

1. Select **Start** ► **Settings** ► **Control Panel** ► **Add/Remove Programs**.  
The Add/Remove Programs dialog box appears.
2. Click **Add/Remove Windows Components**.  
The Windows Components Wizard dialog box appears.
3. Click the **Management and Monitoring Tools** check box and click **Next**.  
Windows asks for the location of the Windows installation files.
4. Specify the location of the Windows installation files and click **OK**.  
SNMP service is installed.

## Installing SNMP for WebLogic

The WebLogic SNMP agent will not work as a subagent for the OS master agent. The workaround is to make WebLogic act as master (on port 161) and delegate to the native OS agent.

### To install SNMP for Weblogic:

1. Modify the `winnt\system32\drivers\etc\services` file from:

```
...  
snmp 161/udp
```

```
...
```

to:

```
snmp 1161/udp (any free port will do here)
```

2. Modify the `startsnmpagent.cmd` file in the WebLogic root. For example:

```
%JAVA% weblogic.SNMPAgent -password mypassword -serverURLs  
t3://localhost:7001 -snmpPort 161 -trapDestinations  
localhost:162 -otherAgents 1161:.1.3.6.1.2.1.
```

The `-snmpPort 161` flag makes WebLogic the master agent.

The `-otherAgents 1161:.1.3.6.1.2.1.` flag tells this agent to delegate the 1.3.6.1.2.1 subtree to port 1161 (where the native agent is running).

3. Run this file and ensure the agent is restarted on the 1161 port.
4. Use system command `netstat -a -n -p udp` to view the active udp ports.  
Both `udp 161` and `udp 1161` should appear in the resulting list. The WebLogic appserver should be running.

For more information see:

[http://www.weblogic.com/docs51/admindocs/snmpagent.html#use\\_agent](http://www.weblogic.com/docs51/admindocs/snmpagent.html#use_agent)

## Installing SNMP for ORACLE

The ORACLE SNMP agent will not work as a subagent for the OS master agent. The workaround is to make ORACLE act as master (on port 161) and delegate to the native OS agent.

### To install SNMP for ORACLE:

1. Modify `winnt\system32\drivers\etc\services` file from:

...

```
snmp 161/udp
```

...

to:

```
snmp 1161/udp (any free port will do here)
```

2. On the ORACLE machine perform following steps:
  - a. Modify the `oracle\ora81\network\admin\encaps.cfg` file by adding the following line:

```
AGENT AT PORT 1161 WITH COMMUNITY PUBLIC
```
  - b. Modify the `oracle\ora81\network\admin\master.cfg` file, specifying that ORACLE runs on port 161.
  - c. Start following services:

```
OracleSNMPPeerMasterAgent
```

```
OraclePeerEncapsulator
```

---

## Setting Up JMX for Application Server Monitoring

You can use JMX to monitor several application servers in the Performance Measurements Manager. Some of these application servers require that you install its specific JMX client software.

### Setting Up JMX Client for WebSphere

To monitor the WebSphere-6.1 application server in the Performance Measurements Manager, you must install the JMX client for the WebSphere-6.1 application server.

### To set up the JMX Client for WebSphere:

1. Browse to the WebSphere application server's installation directory.
2. Copy the following libraries to <WebLOAD directory>\extensions\java:
  - `com.ibm.ws.admin.client_6.1.0.jar`
  - `com.ibm.ws.runtime_6.1.0.jar`
  - `ibmorb.jar`

Now you can monitor the WebSphere-6.1 application server from the PMM.

## Setting Up the JMX Client for JBoss

To monitor the JBoss-4.0.4GA application server in the Performance Measurements Manager, you must install the JMX client for the JBoss-4.0.4GA application server.

### To set up the JMX Client for JBoss:

1. Browse to the JBoss application server's installation directory.
2. Copy the following libraries to <WebLOAD directory>\extensions\java:
  - `jboss-management.jar`
  - `jbossall-client.jar`

Now you can monitor the JBoss application server from the PMM.

## Setting Up JMX Client for Tomcat

To monitor the Tomcat-6.0.1 application server in the Performance Measurements Manager, you must install the JMX client for the Tomcat-6.0.1 application server.

### To set up the JMX Client for Tomcat:

1. Browse to the Tomcat application server's installation directory.
2. Open the server start script, such as the `%TOMCAT_HOME%\bin\catalina.bat` file.
3. Append the following lines to the script:

```
set CATALINA_OPTS=%CATALINA_OPTS% -
Dcom.sun.management.jmxremote

set CATALINA_OPTS=%CATALINA_OPTS% -
Dcom.sun.management.jmxremote.port=3030
```



**Note:** The remote port number must be set to 3030, to work with WebLOAD's user interface.

```
set CATALINA_OPTS=%CATALINA_OPTS% -
Dcom.sun.management.jmxremote.ssl=false
```

```
set CATALINA_OPTS=%CATALINA_OPTS% -
Dcom.sun.management.jmxremote.authenticate=false
```

## Setting Up JMX Client for WebLogic

To monitor the WebLogic-9.0 or WebLogic-10.0 application server in the Performance Measurements Manager, you must install the JMX client for the WebLogic-9.0 or WebLogic-10.0 application server.

### To set up the JMX Client for WebLogic:

1. Browse to the WebLogic application server's installation directory.
2. Open the server start script, such as the `startWebLogic.cmd` file.
3. Append the following lines to the script:

```
set JAVA_OPTIONS=%JAVA_OPTIONS% -
Dcom.sun.management.jmxremote
```

```
set JAVA_OPTIONS=%JAVA_OPTIONS% -
Dcom.sun.management.jmxremote.port=10010
```



**Note:** The remote port number must be set to 10010, to work with WebLOAD's user interface.

```
set JAVA_OPTIONS=%JAVA_OPTIONS% -
Dcom.sun.management.jmxremote.ssl=false
```

```
set JAVA_OPTIONS=%JAVA_OPTIONS% -
Dcom.sun.management.jmxremote.authenticate=false
```

---

## Installing WAS for WebSphere

To monitor the IBM WebSphere 5 application server in the Performance Measurements Manager Wizard, you need to install the IBM WebSphere Application Server WAS, Version 5 Application Client software.

For information about obtaining and installing the WebSphere 5 Application Client software, refer to the WebSphere info center at

<http://www.ibm.com/software/webservers/appserv/infocenter.html> or contact IBM.

When this software package is not installed, or not installed properly, monitoring of WebSphere 5 using WAS is not available and WebLOAD might show one of the following error messages:

- The IBM J2EE Client version x (required for probing WebSphere) is not installed. Please install the IBM J2EE Client.
- The IBM J2EE Client version x (required for probing WebSphere) is not installed properly. Please reinstall the IBM J2EE Client.
- The Java program associated with the IBM J2EE Client (required for probing WebSphere) is not found. Please reinstall the IBM J2EE Client.
- The IBM J2EE Client version x (required for probing WebSphere) is not installed. Before continuing, please install the IBM J2EE Client.
- The file [name], essential for probing WebSphere, could not be found in the J2EE directory. Before continuing, please install the IBM J2EE Client version x.

# Index

## C

- Configuring WebLOAD Analytics database ▪ 11
- Connecting to the Floating License Server ▪ 24

## D

- Database
  - installing and configuring ▪ 11

## F

- Floating license details ▪ 25
- Floating License Server ▪ 23

## I

- Installing
  - JMX client for JBoss ▪ 31
  - JMX client for Tomcat ▪ 31
  - JMX Client for WebLogic ▪ 32
  - JMX client for WebSphere ▪ 30
  - JMX for Application Servers Monitoring ▪ 30
  - SNMP for ORACLE ▪ 30
  - SNMP for WebLogic ▪ 29
  - SNMP Service on a Windows 2000 Platform ▪ 28
  - Third Party Software to Support Server-side Monitoring ▪ 28
  - WAS for WebSphere ▪ 32
  - WebLOAD Analytics database ▪ 11
  - WebLOAD for Linux ▪ 15
  - WebLOAD for Windows ▪ 9
  - WebRM ▪ 10
- Introduction ▪ 1

## J

- JMX client
  - JBoss ▪ 31
  - Tomcat ▪ 31
  - WebLogic ▪ 32
  - WebSphere ▪ 30

## L

- License registration and update ▪ 19
- Linux
  - installing WebLOAD ▪ 15
  - running Load Engine ▪ 16
  - WebLOAD load machine requirements ▪ 6
- Load Engine, running with TestTalk ▪ 17
- Load Generator, running in StandAlone Mode ▪ 18

## O

- Online Help ▪ 3

## P

- Platform requirements
  - Linux ▪ 6
  - Solaris ▪ 6

## R

- Registering WebLOAD license ▪ 19
- Requirements, system ▪ 5
- Running
  - Load Engine on Linux ▪ 16
  - Load Generator in StandAlone Mode ▪ 18

## S

- Server-side monitoring ▪ 28
- SNMP ▪ 28
  - install for ORACLE ▪ 30
  - install for WebLogic ▪ 29
  - install on Windows 2000 ▪ 28
- Solaris platforms ▪ 6
- StandAlone Mode, running the Load Generator ▪ 18
- Standard License Registration ▪ 19
- System Requirements ▪ 5

## T

- Technical Support ▪ 4
- Technical Support Website ▪ 4
- TestTalk ▪ 17
- Typographical Conventions ▪ 2

## U

- Uninstalling
  - WebRM ▪ 27

Updating WebLOAD license ▪ 19  
Upgrading WebLOAD ▪ 11

## V

Viewing license details ▪ 25

## W

WAS for WebSphere ▪ 32  
WebLOAD Analytics database  
    configuring ▪ 11  
    installing ▪ 11  
WebLOAD Documentation ▪ 1  
WebLOAD Open Source Website ▪ 3  
WebRM  
    connect to ▪ 24  
    floating license ▪ 23  
    installing ▪ 10  
    uninstalling ▪ 27  
Where to Get More Information ▪ 3  
Windows Platforms ▪ 5