



SAP[®]



SAP NetWeaver[™]

WebLOAD Professional for SAP Load Testing Support for all SAP Applications

For enterprise grade ERP and CRM applications such as SAP, reliable and efficient performance is a necessity. Even small performance deficiencies and scalability issues can bring business to a halt. WebLOAD's support for SAP was designed specifically to address this need.

WebLOAD enables organizations to test the scalability and performance of the SAP System before going live and prior to any upgrades and configuration changes. WebLOAD can load test all SAP applications including SAP R/3 and the NetWeaver Platform. WebLOAD's support for SAP covers all phases of the load testing lifecycle including script creation, script execution and active monitoring of the SAP system under load.

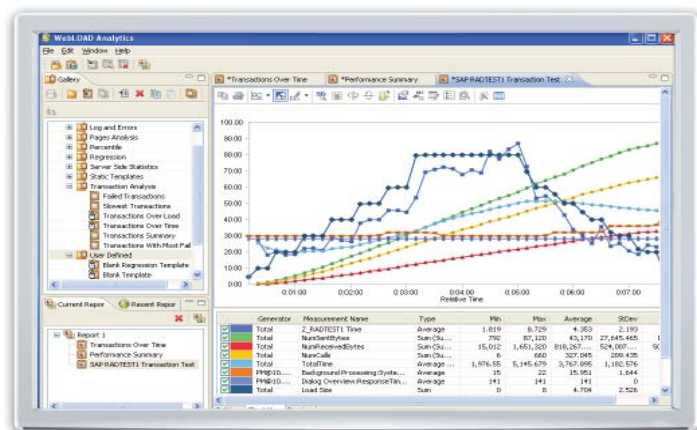
WebLOAD's load testing solution for SAP works at the SAP transaction level, enabling WebLOAD users to activate a series of SAP transactions directly from WebLOAD. Creating business scenarios in this method is simpler and faster than recording at the GUI-level and results in a readable and maintainable test script. With WebLOAD, absolutely no programming knowledge is required to understand and modify SAP test scenarios. With just a few mouse clicks, it is possible to add data parameterization capabilities that ensure unique data for each virtual client.

Generating load with WebLOAD is more efficient and more scalable than recording and running the script on the SAP GUI. WebLOAD generates low processor and memory footprints when emulating multiple users. As a result, high levels of scalability can be achieved even if your team does not have access to large amounts of computing power.

The Java and JavaScript extensibility interface offered by WebLOAD adds more flexibility and power to the test script. With this functionality it is possible to call external functions, activate SAP internal objects via the SAP Java API, and add advanced data manipulation such as scrolling through tables or querying XML responses returned by SAP transaction calls. In addition, it is easy to mix SAP transactions and HTTP recording. This comes in handy when testing composite scenarios such as those involving SAP and Business Objects.

During test execution, run-time monitors provide real-time feedback on test progress. Client-side statistics such as transaction response time, failed transactions count, throughput, etc. are processed for quick analysis and easy reporting. In addition, WebLOAD collects server-side statistics from all layers of the SAP system including hardware, database and application server measurements.

These statistics are further analyzed in WebLOAD Analytics to provide in-depth reports on potential bottlenecks and the overall health of the SAP system.



Contact Information:

North America: RadView Software Inc 991 Highway 22 West, Suite 200 Bridgewater NJ 08807
 Phone: 908-526-7756 Fax: 908-864-8099 Toll Free: 1-888-RADVIEW

International: RadView Software Ltd. 14 Hamelacha Street, Rosh Haayin 48091, Israel
 Phone: 972-3-915-7060 Fax: 973-3-915-7553

RadView corporate website: www.radview.com

Key Features:

- Supports load testing of all SAP applications
- Creates test scenarios quickly, without the need for programming knowledge
- Generates efficient and scalable load
- Minimizes memory and processor footprint, enabling large multi-user tests with limited hardware resources
- Supports mixed SAP and HTTP scenarios
- Enables insertion of custom Java and JavaScript code for flexible test customization
- Creates reports in real time to enable immediate identification of performance bottlenecks
- Collects and integrates server resource data with real-time application performance data

With an easy-to-use test editor, advanced test scheduling, real-time reporting, and a highly scalable execution engine, WebLOAD helps ensure that your SAP applications are prepared to handle the largest user loads.

Need more information? Please contact RadView via the Quick Contact form to learn more about load testing for SAP applications.

Supported Platforms:

- SAP GUI including the SAP ERP application
- SAP NetWeaver technology platform and SAP NetWeaver Portal
- Business intelligence solutions, SAP NetWeaver Business Warehouse,
- SAP CRM, SAP Advance Planning & Optimization (SAP APO)
- SAP Business Suite 7
- EDI / RFC Interfaces