

What is multimedia browsing?

Multimedia browsing occurs when an end user accesses multiple types of media and content. In this type of browsing, the end user interacts with the web site in several media dimensions and consumes different media types such as text, graphics, audio and video.

Multimedia Add-on for WebLOAD Professional

The new WebLOAD Multimedia Add-on supports streaming media applications using the RTSP/RTP video streaming protocol. With this add-on it is now possible to create composite test scripts, mixing textual, graphic and streaming media objects that emulate the browsing of a real user. Streaming-related statistics provide accurate analysis of application performance and support the creation of in-depth performance reports. Additional support for authentication, mainly for mobile environments, is possible by using the Radius protocol.

Extending the Reach of WebLOAD Professional

WebLOAD Professional is designed to meet the testing and support requirements of performance testers – without breaking the bank. Built on a robust Open Source offering and backed by a strong community of developers and testers, WebLOAD Professional provides you with everything you need to guarantee the performance of your internet application.

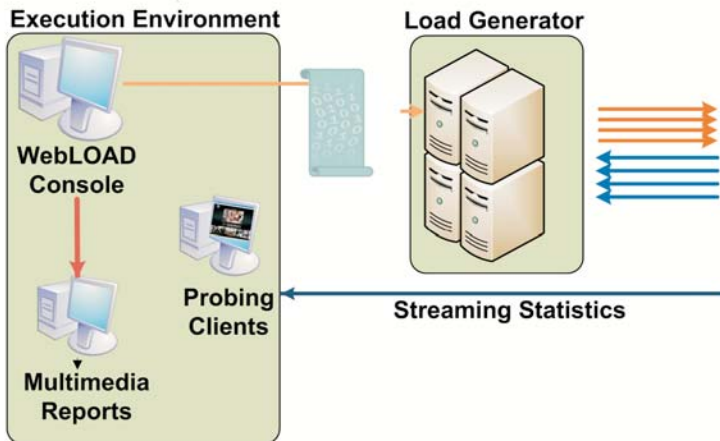
The robust features and scalability of this advanced product meet the most demanding requirements for measuring performance at various levels of load, identifying parameters for scalability and determining your internet application's reliability over extended runs.

Many of the world's leading companies have discovered that WebLOAD Professional, with its use of open standards such as JavaScript combined with attractive and reasonable pricing, provides the most cost-effective and powerful alternative to over-priced proprietary performance testing tools. With the Multimedia Add-on it is now possible to extend these inherent benefits of WebLOAD to the most demanding multimedia environments.



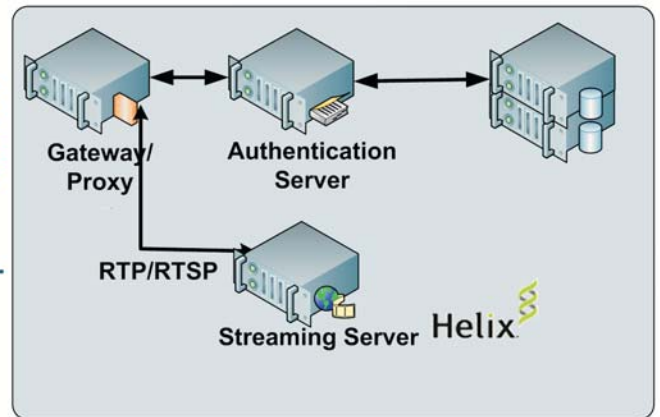
Testing the Real-Life Multimedia Experience

The Multimedia Add-on enables performance testing of multimedia web sites by simulating real user browsing of textual, graphical and video streaming. A typical multimedia test script includes mixed protocol commands combining standard HTTP with RTSP/RTP commands for accessing multimedia objects. The Multimedia Add-on also supports the Radius Protocol for authentication, mainly for mobile environments.



About RadView

Founded in 1993, RadView™ Software Ltd. has established its expertise in performance testing for internet applications by remaining focused on its core market. WebLOAD, our flagship product is installed at over 1,600 organizations from all major industries including AerLingus, Best Western, Citigroup, Deutsche Bank, Federal Express, Harvard University, Morningstar, Kinkos, Samsung and Sun Microsystems.



WebLOAD's efficient load generation technology enables simulation of hundreds of streams from one PC machine. The load-test can be done against the streaming server directly or routed through a proxy server. Throughout the execution of the scripts, WebLOAD collects specific multimedia performance measurements, enabling the user to analyze the results and identify the underlying performance bottlenecks.

System requirements

WebLOAD Professional 8.1 and above

Supported environments

Helix streaming server

Darwin Streaming Server (DSS)

Any other streaming server supporting the RTSP/RTP Protocols

Contact Information:

North America

RadView Software, Inc.

111 Deerwood Road, Suite: 200

San Ramon, California 94583

Phone: +925-831-4808 **Fax:** +925-831-4807

Toll Free: +1-888-RADVIEW

United Kingdom

RadView Software (UK)

90 Long Acre, Covent Garden, London WC2E 9RZ

Phone: +44-207-716-5840 **Fax:** +44 207 716 5740

Other Countries

RadView Software Ltd.

14 Hamelacha Street, Rosh Haayin 48091, Israel

Phone: +972-3-915-7060 **Fax:** +972-3-915-7683

RadView corporate website: www.radview.com

WebLOAD community website: www.webload.org

© RadView Software Ltd. All rights reserved. WebLOAD is covered by US patent 6,434,513. WebLOAD is a trademark of RadView Software Ltd. Microsoft Windows 2000, XP and 2003 Server are registered trademarks of Microsoft Corporation. Sun Solaris is a registered trademark of Sun Microsystems. All other company names, brand names, or product names are registered trademarks, trademarks, or service marks of their respective holders. Technical information in this document is subject to change without notice.

